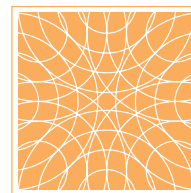


# 15 HIGH STREET, NORWELL, MA

## SCHEMATIC ARCHITECTURE PACKAGE

JANUARY 29, 2021



UNION STUDIO

ARCHITECTURE & COMMUNITY DESIGN

[www.unionstudioarch.com](http://www.unionstudioarch.com)

140 Union Street Providence, RI 02903

[t 401.272.4724](tel:4012724724) [f 401.272.4825](tel:4012724825)



PROGRAM

- 8-Unit Walk Ups:  
(12) 1BR Flats and  
(4) 2BR Townhouses
- 6-Unit Walk Ups:  
(4) 1BR Flats  
(8) 2BR Townhouses
- 2/1BR Stacked Flats  
(6) Lower 1BR Flats  
(6) Upper 2BR Flats
- (6) 1BR Townhouses
- (4) 2BR Townhouses
- (6) 3BR Townhouses

(56) Units /  
(90) Bedrooms Total

\* (3) Accessible Units

(122) Parking Spaces  
(52) Unit Garages  
(52) Unit Driveways  
(18) Surface Spaces

\* ILLUSTRATIVE SITE PLAN INTENDED TO HELP LOCATE  
UNITS AND GENERAL SITE FEATURES: SEE CIVIL AND  
LANDSCAPE PLANS FOR MORE DETAIL



High Street

[Private Drive]

# 15 HIGH STREET, NORWELL, MA

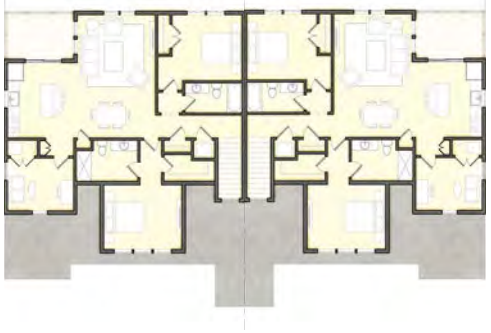
ILLUSTRATIVE SITE PLAN

JANUARY 29, 2021

SCALE: 1"=50'-0"







# 15 HIGH STREET, NORWELL, MA

ELEVATIONS - FOUR-PLEX

JANUARY 29, 2021

SCALE: 3/32"=1'-0"

0' 1' 2' 4' 10' 20' 40'



REAR ELEVATION



SIDE ELEVATION

TYPICAL EXTERIOR MATERIALS:

- COMPOSITE CLAPBOARD SIDING WITH SHINGLE ACCENTS
- SMOOTH COMPOSITE RUNNING TRIM AND CORNERBOARDS
- SMOOTH MDO PANELS
- WINDOW CASINGS WITH PVC SUBSILL
- DOUBLE HUNG INSULATED VINYL WINDOWS WITH LOW-E GLAZING AND DIVIDED LITES
- FIBERGLASS ENTRY DOOR WITH VISION LITE
- STEEL CARRIAGE HOUSE STYLE OVERHEAD GARAGE DOOR WITH LITES
- 25 YR ASPHALT SHINGLE ROOF
- ALUMINUM GUTTERS AND DOWNSPOUTS
- COMPOSITE DECKING
- PVC BRACKETS AND CORBELS
- PVC POSTS AND RAILING SYSTEMS

15 HIGH STREET, NORWELL, MA

ELEVATIONS - FOUR-PLEX

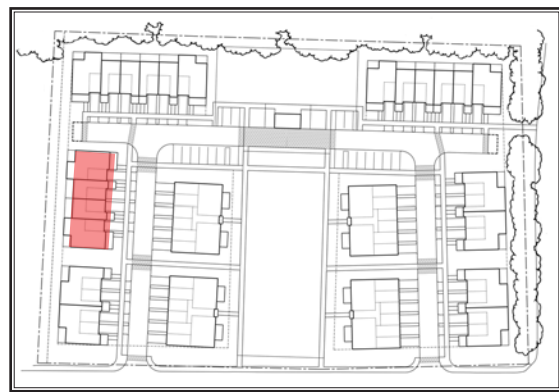
JANUARY 29, 2021

SCALE: 3/32"=1'-0"

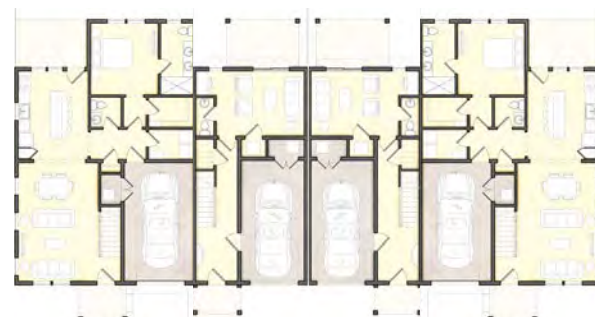
0' 1' 2' 4' 10' 20' 40'



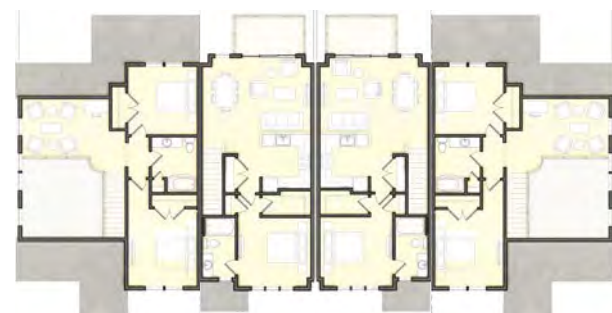




SITE KEY PLAN



3BR 1BR 1BR 3BR  
FIRST FLOOR KEY PLAN



3BR 1BR 1BR 3BR  
SECOND FLOOR KEY PLAN

# 15 HIGH STREET, NORWELL, MA

ELEVATIONS - FOUR UNIT TOWNHOUSES

JANUARY 29, 2021

SCALE: 3/32"=1'-0"

0' 1' 2' 4' 10' 20' 40'





REAR ELEVATION



SIDE ELEVATION

TYPICAL EXTERIOR MATERIALS:

- COMPOSITE CLAPBOARD SIDING WITH SHINGLE ACCENTS
- SMOOTH COMPOSITE RUNNING TRIM AND CORNERBOARDS
- SMOOTH MDO PANELS
- WINDOW CASINGS WITH PVC SUBSILL
- DOUBLE HUNG INSULATED VINYL WINDOWS WITH LOW-E GLAZING AND DIVIDED LITES
- FIBERGLASS ENTRY DOOR WITH VISION LITE
- STEEL CARRIAGE HOUSE STYLE OVERHEAD GARAGE DOOR WITH LITES
- 25 YR ASPHALT SHINGLE ROOF
- ALUMINUM GUTTERS AND DOWNSPOUTS
- COMPOSITE DECKING
- PVC BRACKETS AND CORBELS
- PVC POSTS AND RAILING SYSTEMS

# 15 HIGH STREET, NORWELL, MA

ELEVATIONS - FOUR UNIT TOWNHOUSES

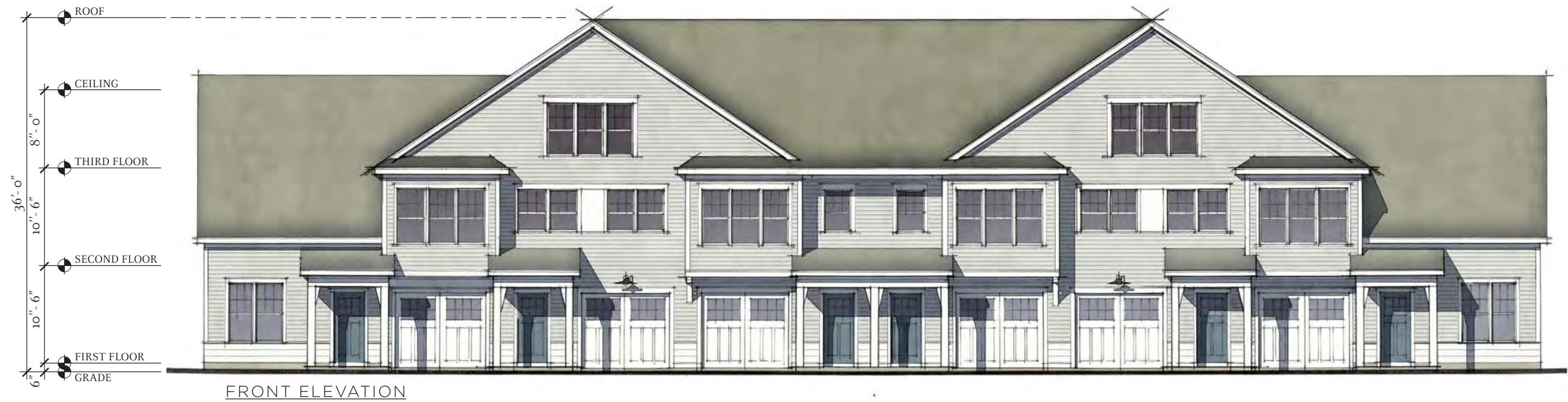
JANUARY 29, 2021

SCALE: 3/32"=1'-0"

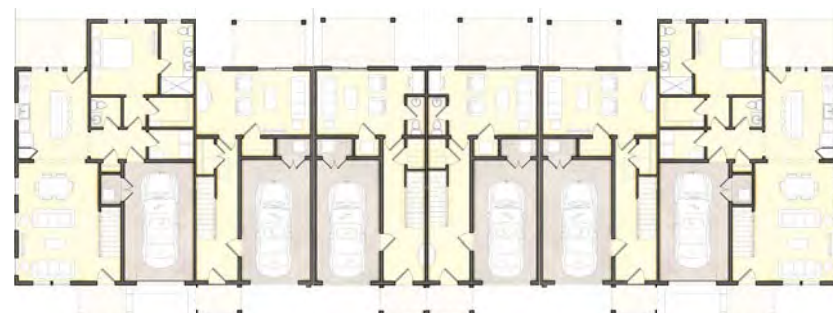
0' 1' 2' 4' 10' 20' 40'







SITE KEY PLAN



3BR 2BR 1BR 1BR 2BR 3BR  
FIRST FLOOR KEY PLAN



3BR 2BR 1BR 1BR 2BR 3BR  
SECOND FLOOR KEY PLAN



2BR 2BR  
THIRD FLOOR KEY PLAN

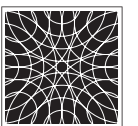
# 15 HIGH STREET, NORWELL, MA

ELEVATIONS - SIX UNIT TOWNHOUSES

JANUARY 29, 2021

SCALE: 3/32"=1'-0"

0' 1' 2' 4' 10' 20' 40'







REAR ELEVATION



SIDE ELEVATION

TYPICAL EXTERIOR MATERIALS:

- COMPOSITE CLAPBOARD SIDING WITH SHINGLE ACCENTS
- SMOOTH COMPOSITE RUNNING TRIM AND CORNERBOARDS
- SMOOTH MDO PANELS
- WINDOW CASINGS WITH PVC SUBSILL
- DOUBLE HUNG INSULATED VINYL WINDOWS WITH LOW-E GLAZING AND DIVIDED LITES
- FIBERGLASS ENTRY DOOR WITH VISION LITE
- STEEL CARRIAGE HOUSE STYLE OVERHEAD GARAGE DOOR WITH LITES
- 25 YR ASPHALT SHINGLE ROOF
- ALUMINUM GUTTERS AND DOWNSPOUTS
- COMPOSITE DECKING
- PVC BRACKETS AND CORBELS
- PVC POSTS AND RAILING SYSTEMS

# 15 HIGH STREET, NORWELL, MA

ELEVATIONS - SIX UNIT TOWNHOUSES

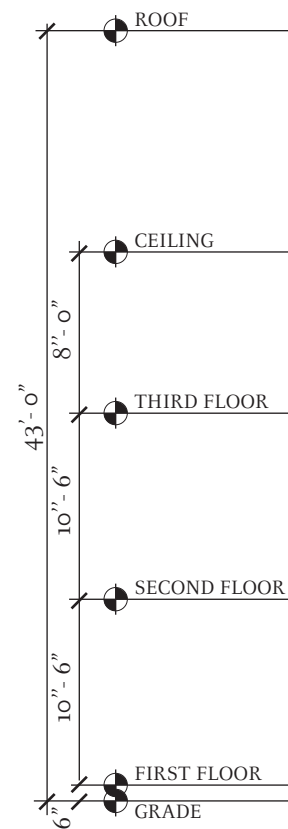
JANUARY 29, 2021

SCALE: 3/32"=1'-0"

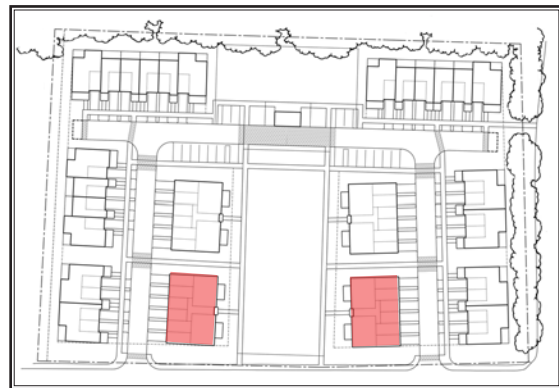
0' 1' 2' 4' 10' 20' 40'







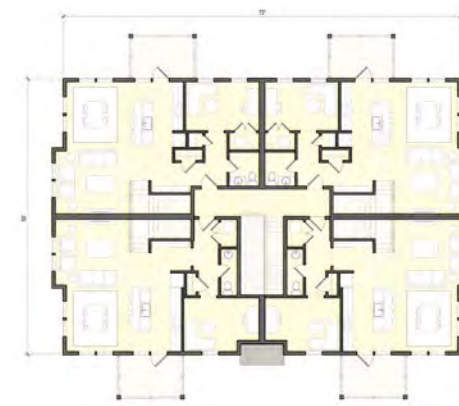
FRONT ELEVATION



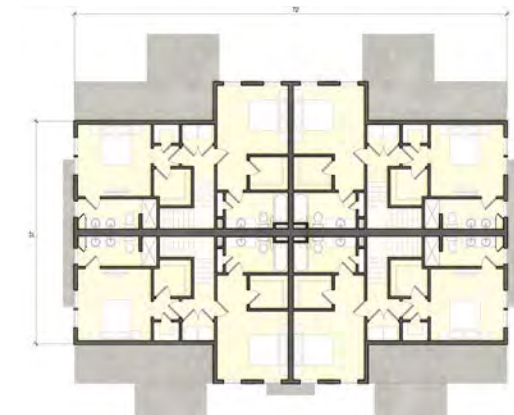
SITE KEY PLAN



FIRST FLOOR KEY PLAN



SECOND FLOOR KEY PLAN



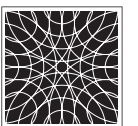
THIRD FLOOR KEY PLAN

# 15 HIGH STREET, NORWELL, MA

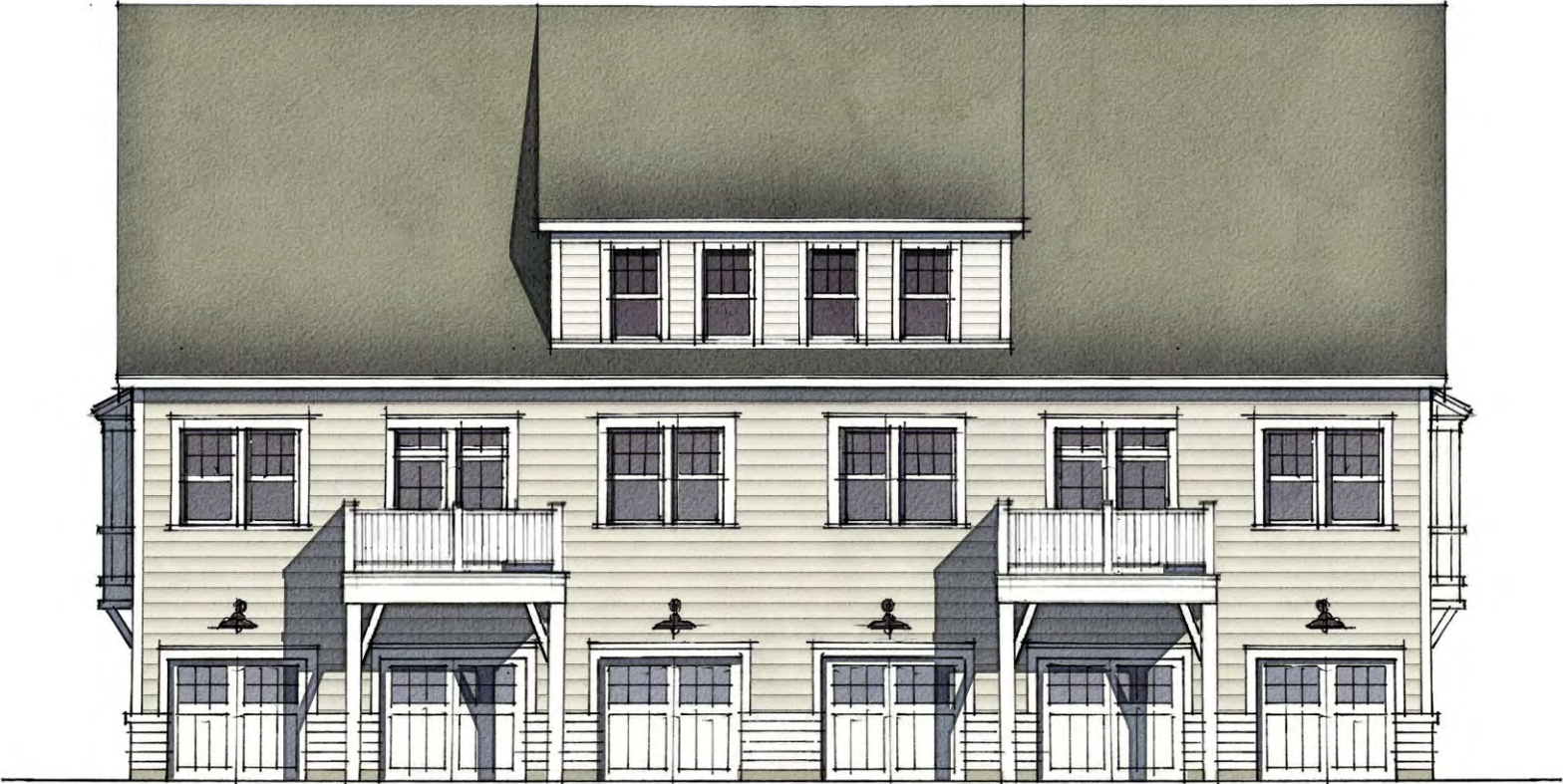
ELEVATIONS - SIX-PLEX

JANUARY 29, 2021

SCALE: 3/32"=1'-0"







REAR ELEVATION



SIDE ELEVATION

TYPICAL EXTERIOR MATERIALS:

- COMPOSITE CLAPBOARD SIDING WITH SHINGLE ACCENTS
- SMOOTH COMPOSITE RUNNING TRIM AND CORNERBOARDS
- SMOOTH MDO PANELS
- WINDOW CASINGS WITH PVC SUBSILL
- DOUBLE HUNG INSULATED VINYL WINDOWS WITH LOW-E GLAZING AND DIVIDED LITES
- FIBERGLASS ENTRY DOOR WITH VISION LITE
- STEEL CARRIAGE HOUSE STYLE OVERHEAD GARAGE DOOR WITH LITES
- 25 YR ASPHALT SHINGLE ROOF
- ALUMINUM GUTTERS AND DOWNSPOUTS
- COMPOSITE DECKING
- PVC BRACKETS AND CORBELS
- PVC POSTS AND RAILING SYSTEMS

15 HIGH STREET, NORWELL, MA

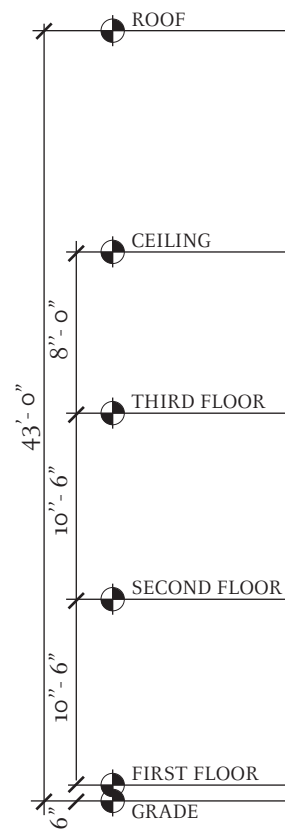
ELEVATIONS - SIX-PLEX

JANUARY 29, 2021

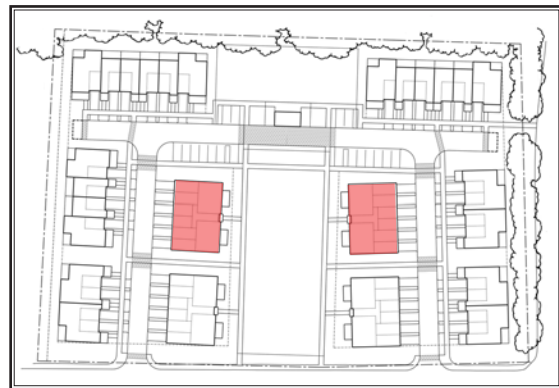
SCALE: 3/32"=1'-0"







FRONT ELEVATION



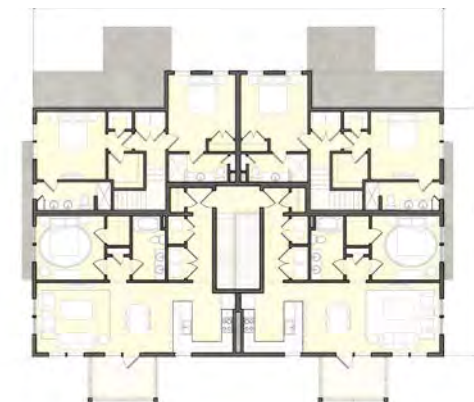
SITE KEY PLAN



FIRST FLOOR KEY PLAN



SECOND FLOOR KEY PLAN



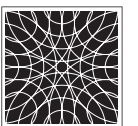
THIRD FLOOR KEY PLAN

# 15 HIGH STREET, NORWELL, MA

ELEVATIONS - EIGHT-PLEX

JANUARY 29, 2021

SCALE: 3/32"=1'-0"







REAR ELEVATION



SIDE ELEVATION

TYPICAL EXTERIOR MATERIALS:

- COMPOSITE CLAPBOARD SIDING WITH SHINGLE ACCENTS
- SMOOTH COMPOSITE RUNNING TRIM AND CORNERBOARDS
- SMOOTH MDO PANELS
- WINDOW CASINGS WITH PVC SUBSILL
- DOUBLE HUNG INSULATED VINYL WINDOWS WITH LOW-E GLAZING AND DIVIDED LITES
- FIBERGLASS ENTRY DOOR WITH VISION LITE
- STEEL CARRIAGE HOUSE STYLE OVERHEAD GARAGE DOOR WITH LITES
- 25 YR ASPHALT SHINGLE ROOF
- ALUMINUM GUTTERS AND DOWNSPOUTS
- COMPOSITE DECKING
- PVC BRACKETS AND CORBELS
- PVC POSTS AND RAILING SYSTEMS

# 15 HIGH STREET, NORWELL, MA

ELEVATIONS - EIGHT-PLEX

JANUARY 29, 2021

SCALE: 3/32"=1'-0"

0' 1' 2' 4' 10' 20' 40'





**SQUARE FOOTAGE TOTALS**

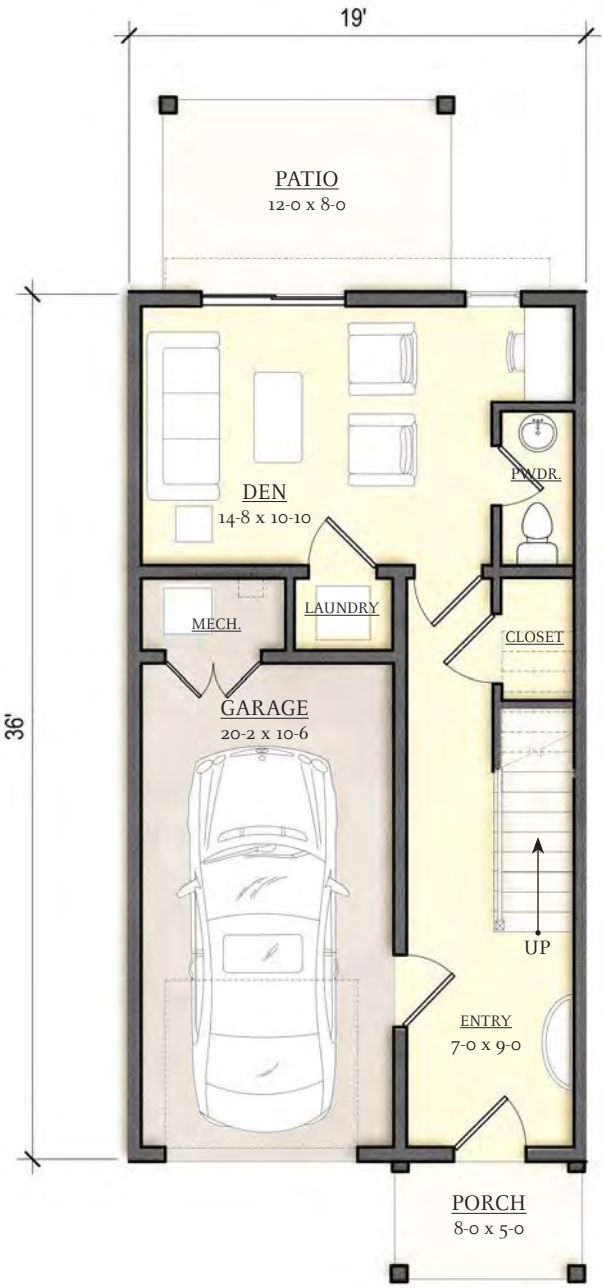
1BR Townhouse Total - 1183 sf

First Floor - 456 sf

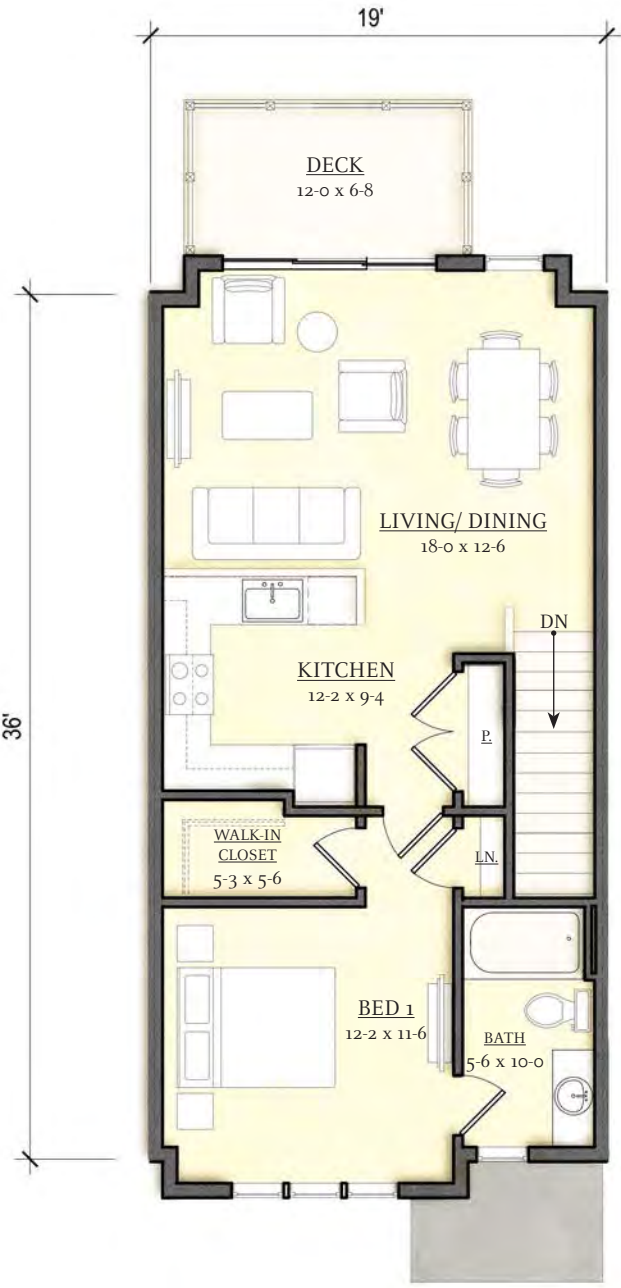
Second Floor - 727 sf



KEY PLAN



FIRST FLOOR

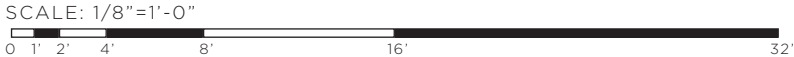


SECOND FLOOR

# 15 HIGH STREET, NORWELL, MA

UNIT PLANS - ONE BEDROOM TOWNHOUSE

JANUARY 29, 2021



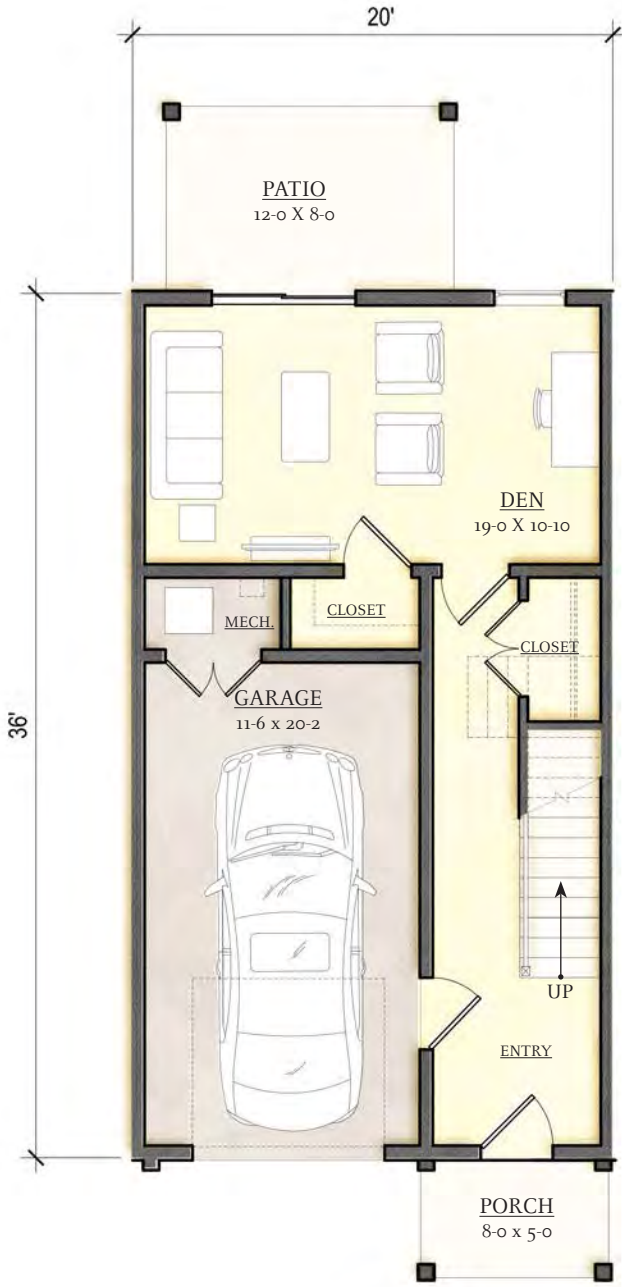


**SQUARE FOOTAGE TOTALS**

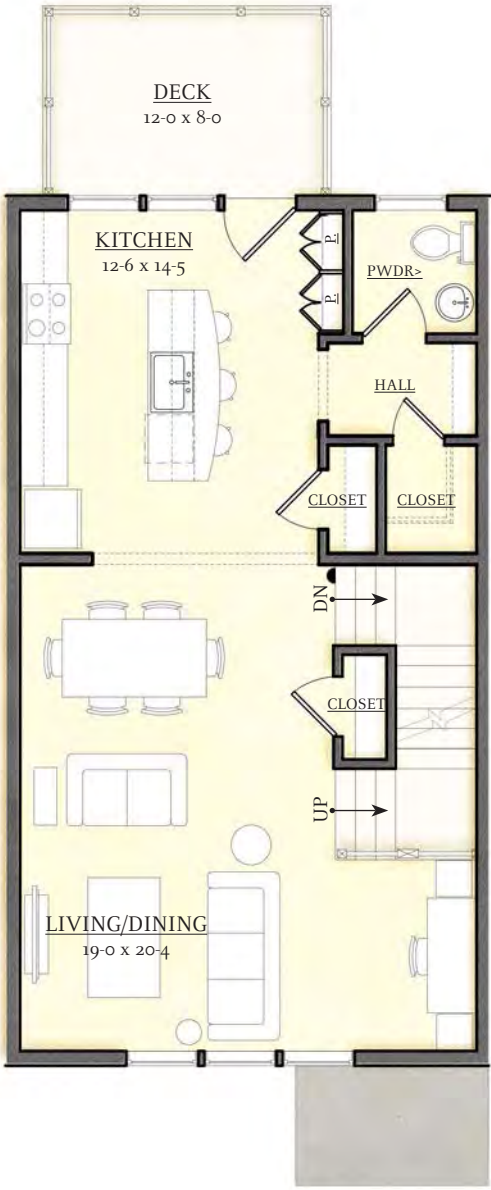
2BR Townhouse Total - 1786 sf  
 First Floor - 472 sf  
 Second Floor - 720 sf  
 Third Floor- 594 sf



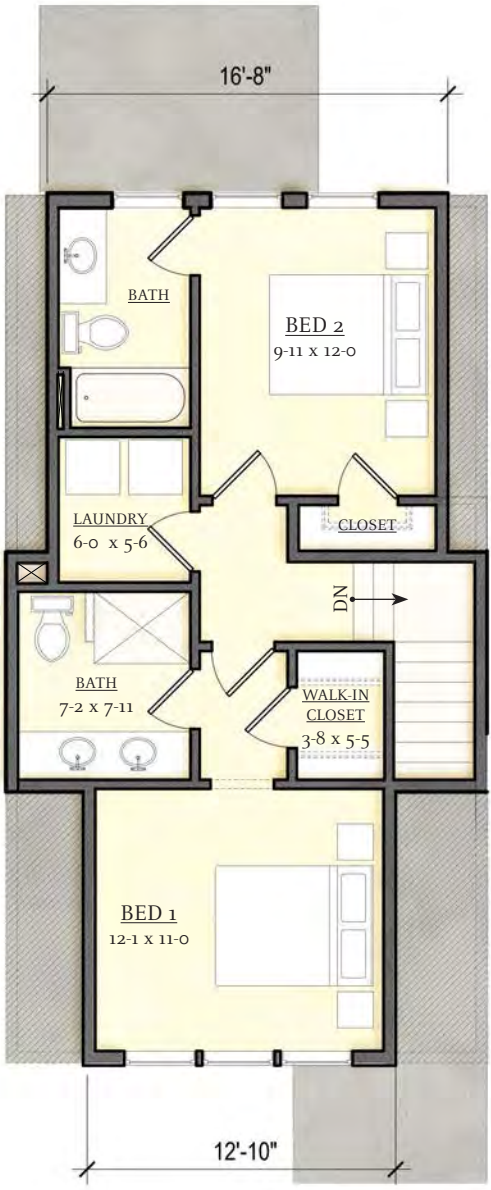
KEY PLAN



FIRST FLOOR



SECOND FLOOR

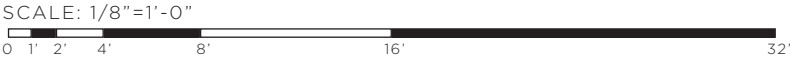


THIRD FLOOR

# 15 HIGH STREET, NORWELL, MA

UNIT PLANS - TWO BEDROOM TOWNHOUSE

JANUARY 29, 2021



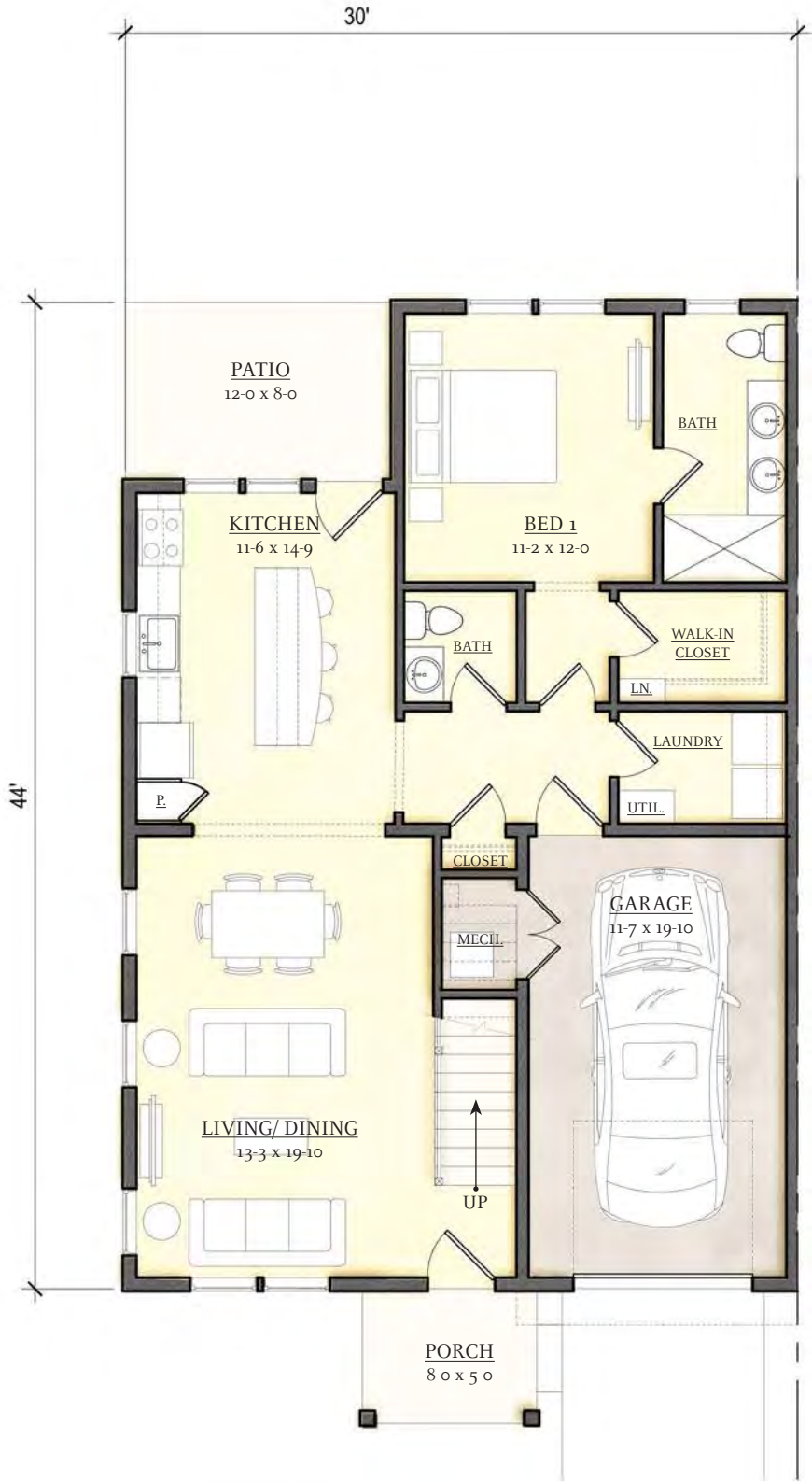


**SQUARE FOOTAGE TOTALS**

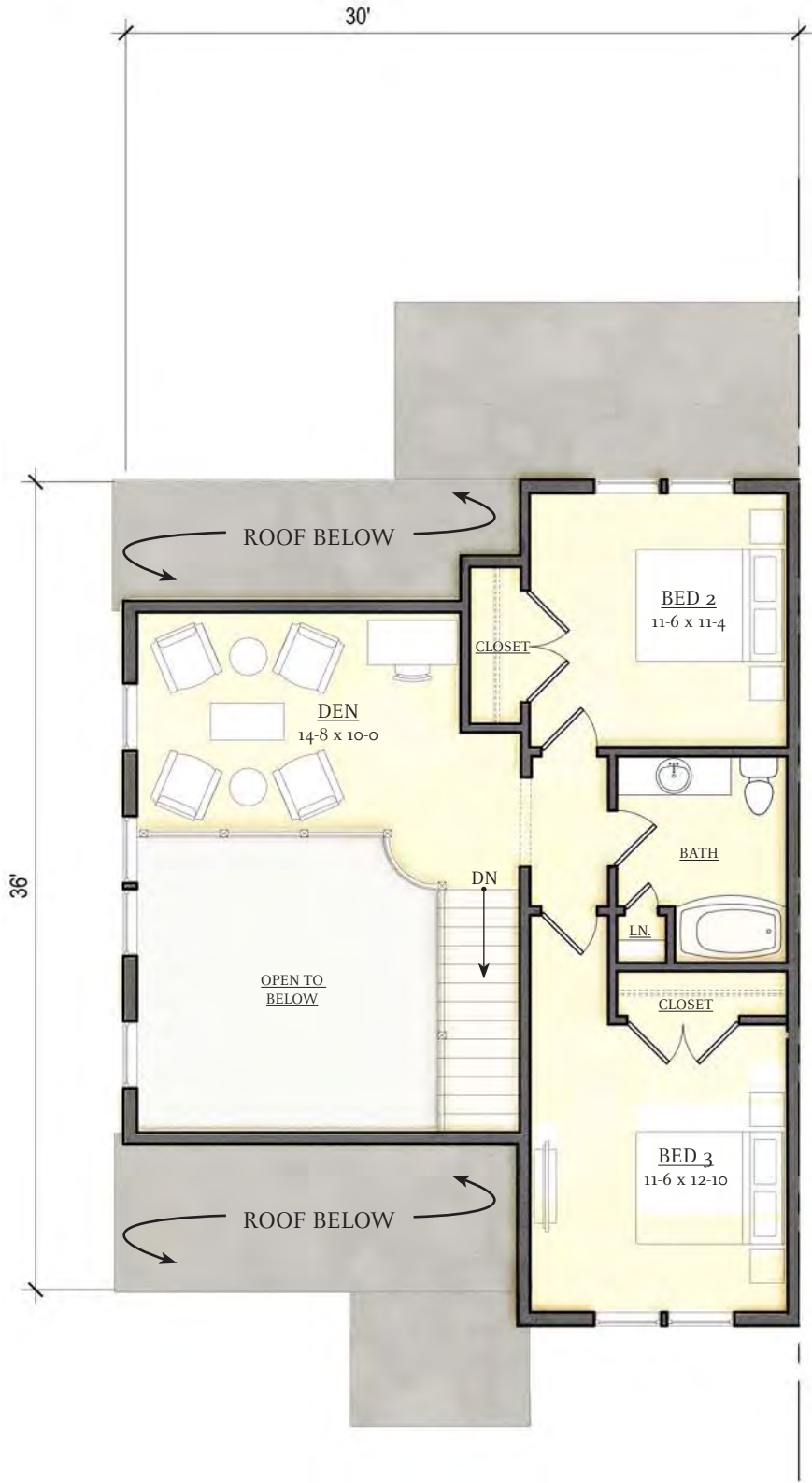
3BR Townhouse ADA Total - 1648 sf  
 First Floor - 980 sf  
 Second Floor - 668 sf



KEY PLAN



FIRST FLOOR



SECOND FLOOR

# 15 HIGH STREET, NORWELL, MA

UNIT PLANS - THREE BEDROOM TOWNHOUSE

JANUARY 29, 2021

SCALE: 1/8"=1'-0"



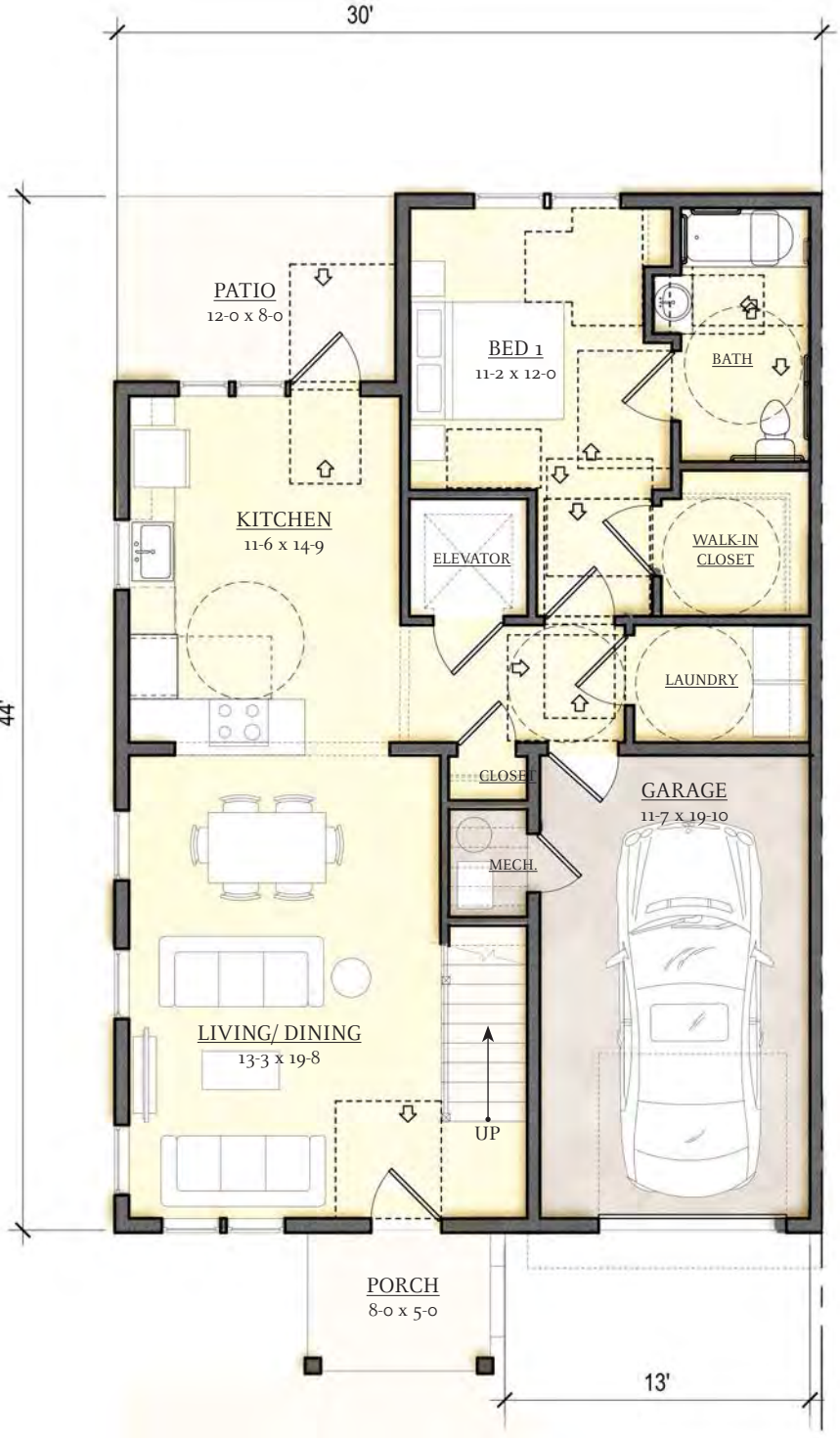


**SQUARE FOOTAGE TOTALS**

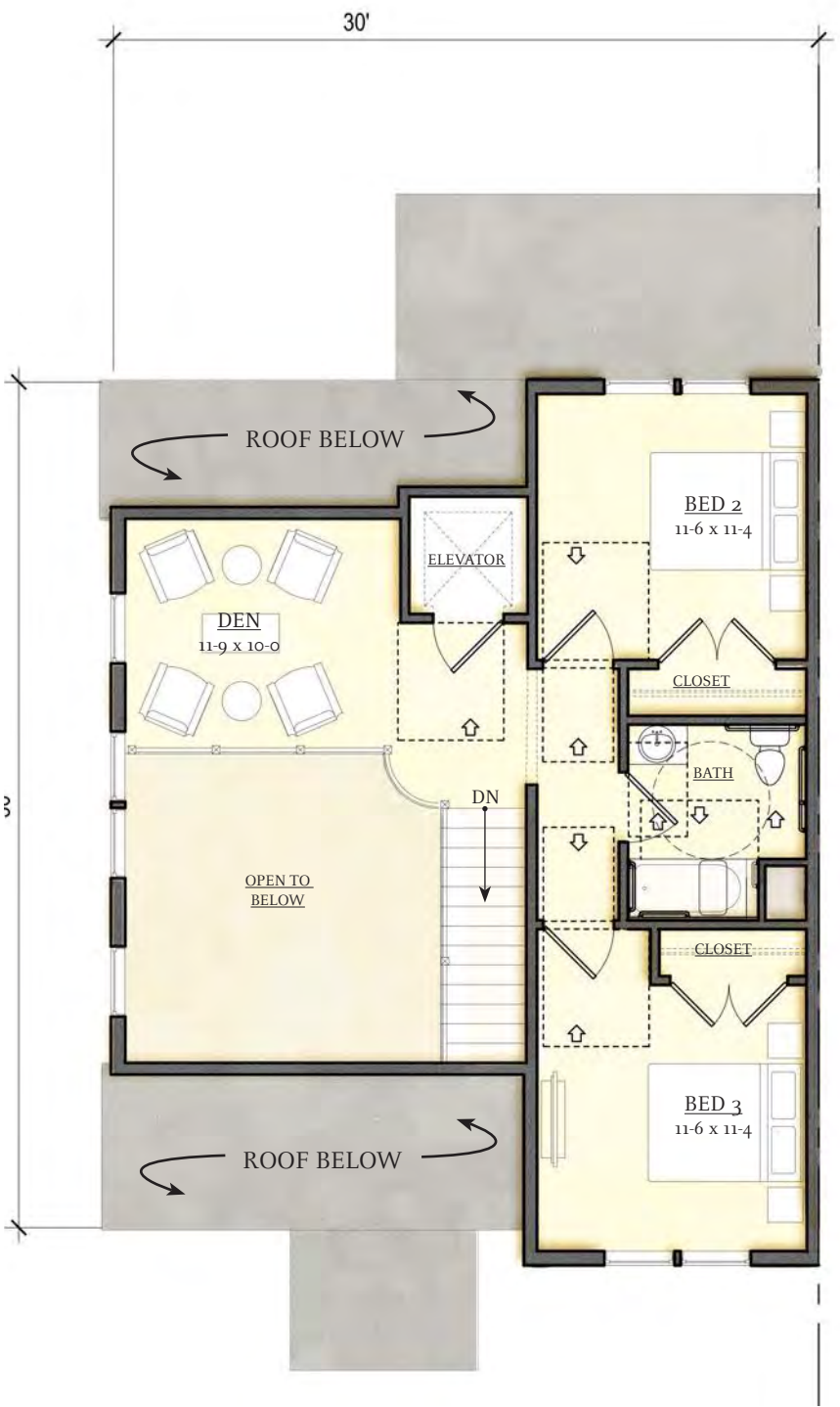
3BR Townhouse ADA Total - 1648 sf  
 First Floor - 980 sf  
 Second Floor - 668 sf



KEY PLAN



FIRST FLOOR



SECOND FLOOR

# 15 HIGH STREET, NORWELL, MA

UNIT PLANS - THREE BEDROOM ACCESSIBLE TOWNHOUSE

JANUARY 29, 2021





**SQUARE FOOTAGE TOTALS**

1BR Lower Flat Total - 1015 sf

2BR Upper Flat Total- 1377 sf

First Floor- 112 sf

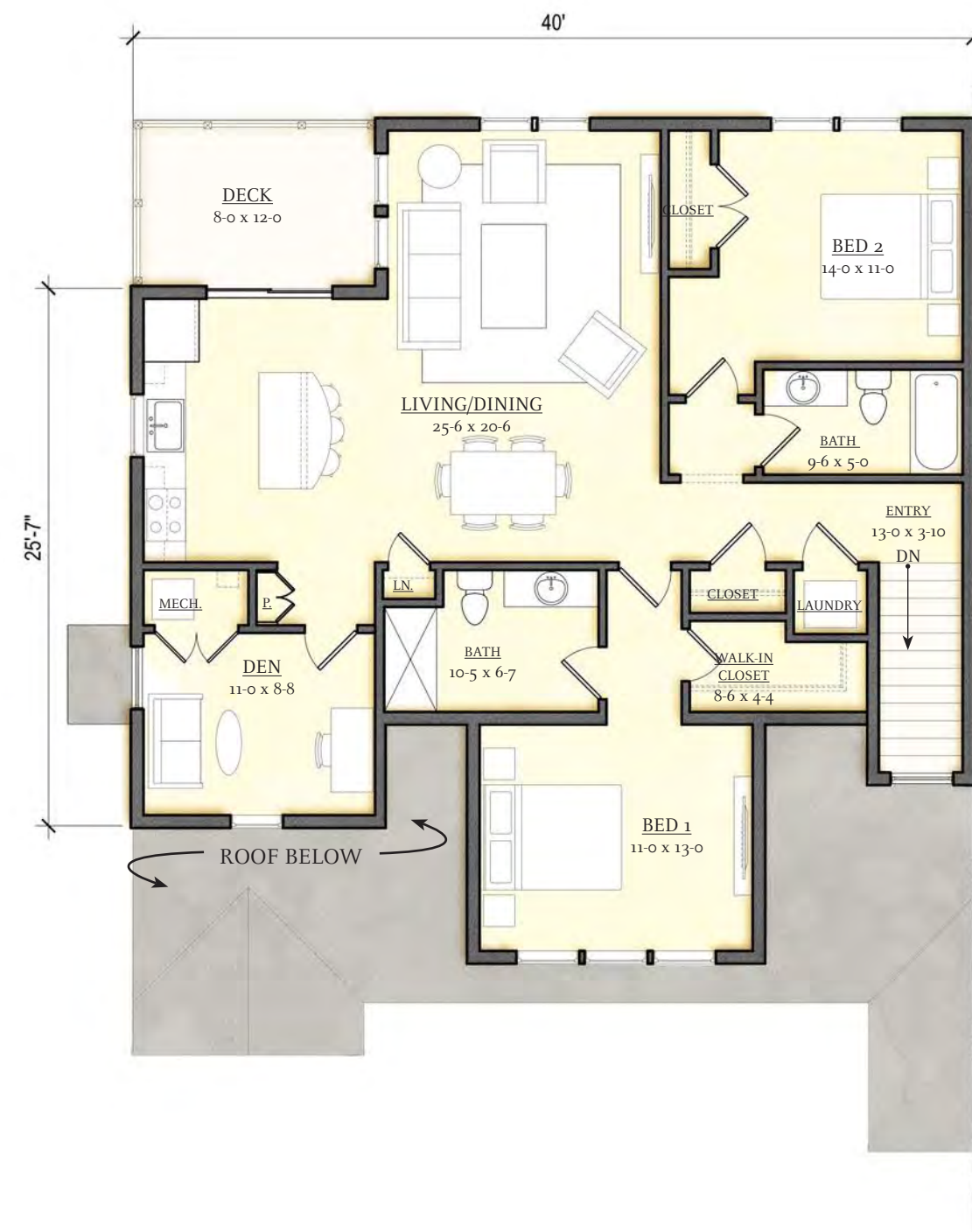
Second Floor- 1265 sf



KEY PLAN



FIRST FLOOR



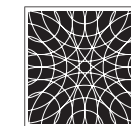
SECOND FLOOR

# 15 HIGH STREET, NORWELL, MA

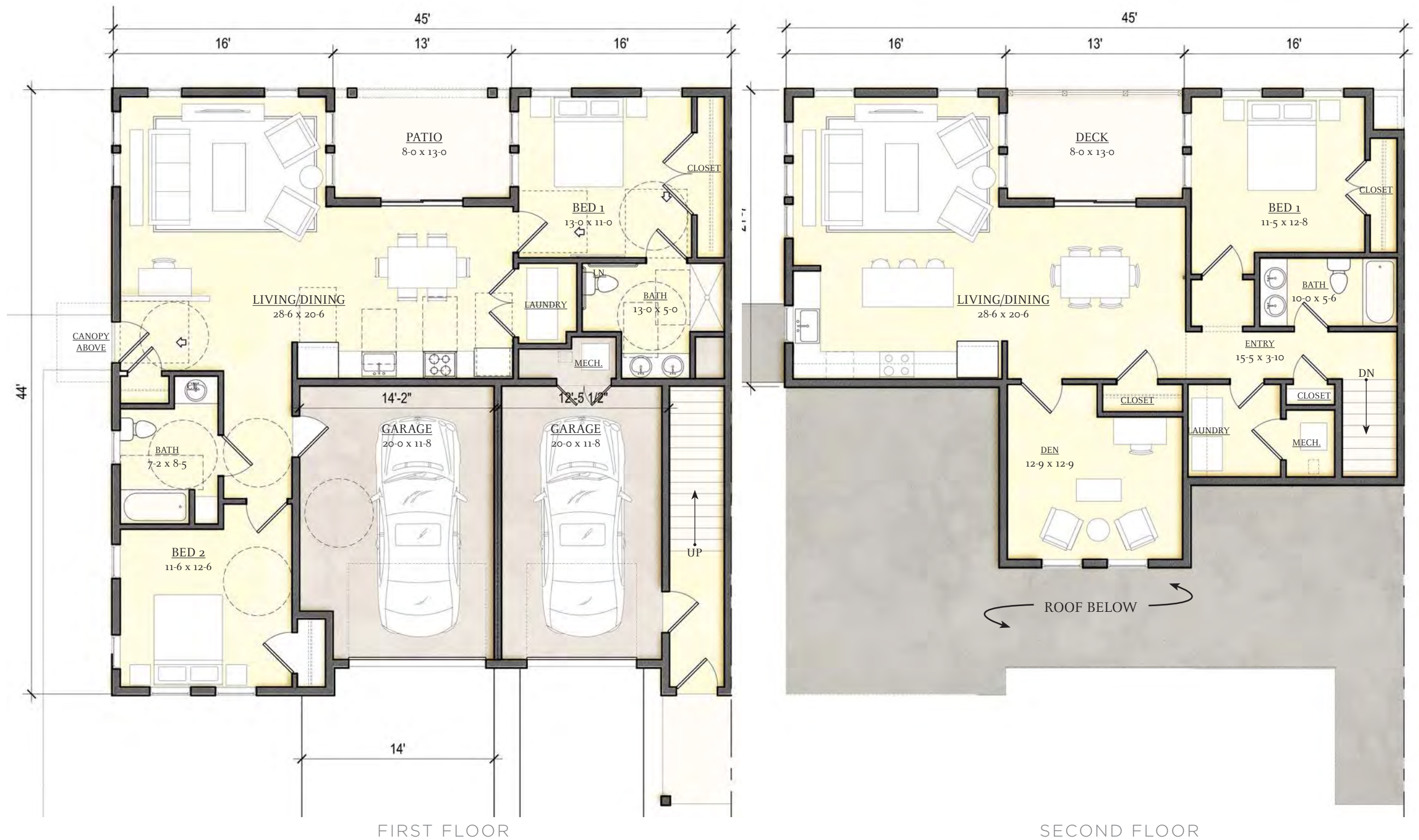
UNIT PLANS - TWO BEDROOM FLAT OVER ONE BEDROOM FLAT

JANUARY 29, 2021

SCALE: 1/8"=1'-0"







# 15 HIGH STREET, NORWELL, MA

UNIT PLANS - ONE BEDROOM FLAT OVER TWO BEDROOM ACCESSIBLE FLAT

JANUARY 29, 2021

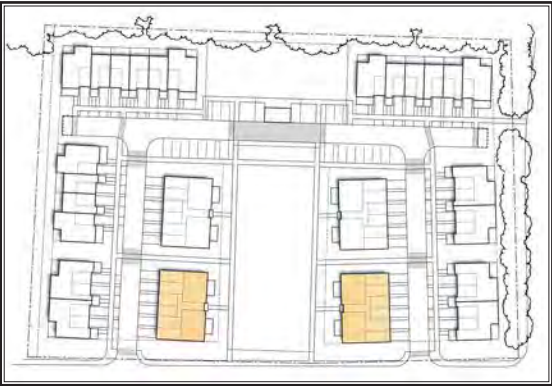
SCALE: 1/8"=1'-0"



**SQUARE FOOTAGE TOTALS**

Six-Plex Building Total - 8585 sf  
 First Floor - 1906 sf  
 Second Floor - 3683 sf  
 Third Floor- 2996 sf

1BR Flat Total - 800 sf



KEY PLAN



FIRST FLOOR

# 15 HIGH STREET, NORWELL, MA

UNIT PLANS - SIX-PLEX

JANUARY 29, 2021

SCALE: 1/8"=1'-0"





SQUARE FOOTAGE TOTALS

Six-Plex Building Total - 8585 sf

First Floor - 1906 sf

Second Floor - 3683 sf

Third Floor- 2996 sf

2BR Townhouse A Total - 1610 sf

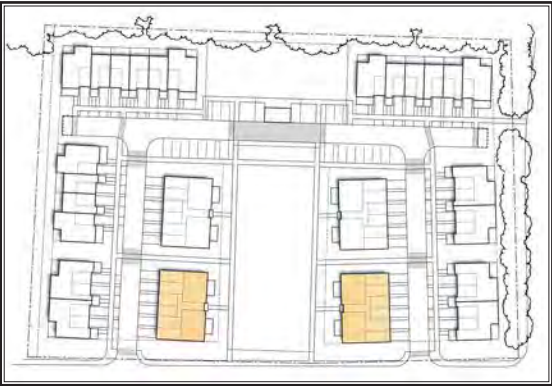
Second Floor- 860 sf

Third Floor- 750 sf

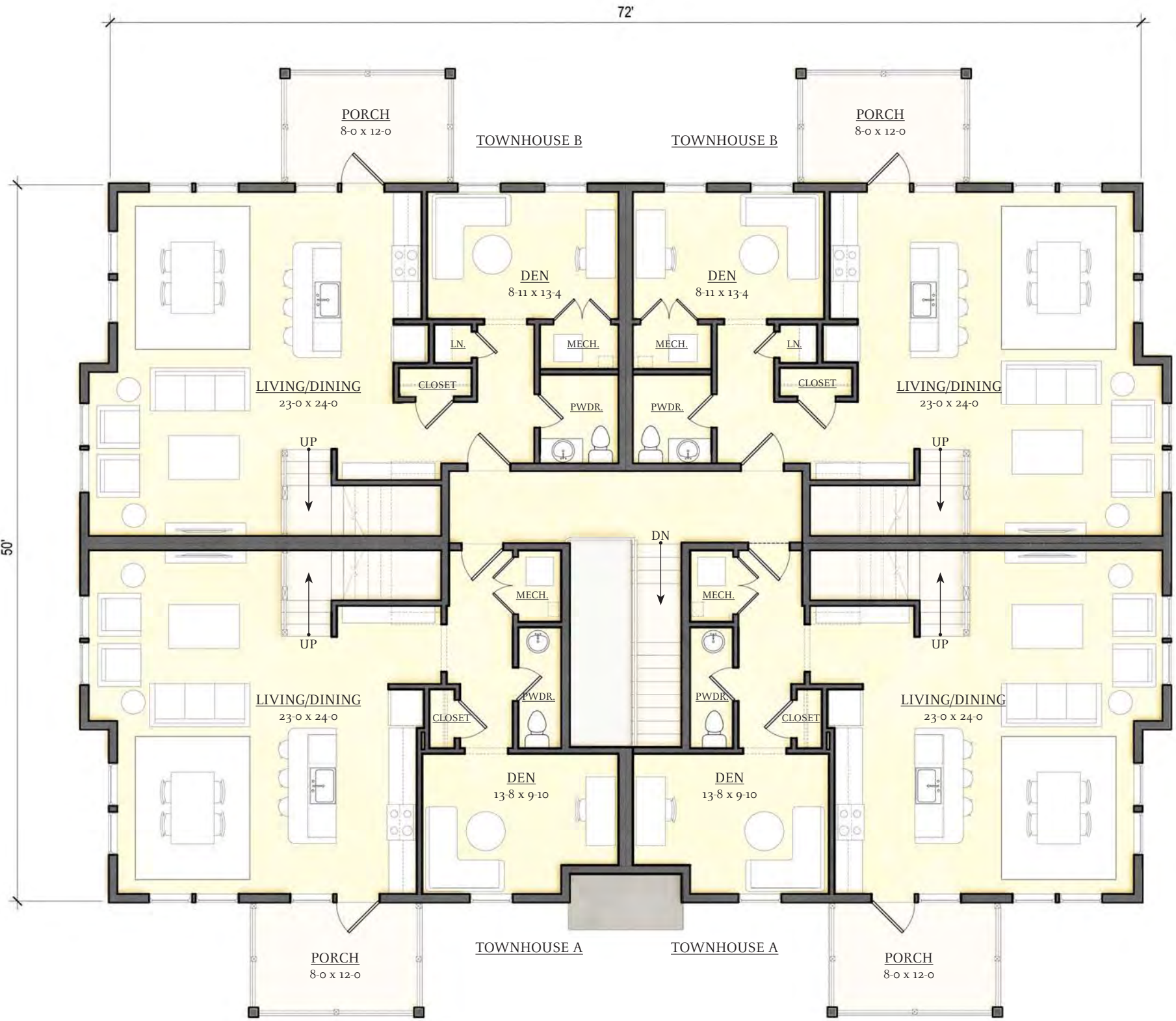
2BR Townhouse B Total - 1615 sf

Second Floor- 865 sf

Third Floor- 750 sf



KEY PLAN



SECOND FLOOR

15 HIGH STREET, NORWELL, MA

UNIT PLANS - SIX-PLEX

JANUARY 29, 2021

SCALE: 1/8"=1'-0"





SQUARE FOOTAGE TOTALS

Six-Plex Building Total - 8585 sf

First Floor - 1906 sf

Second Floor - 3683 sf

Third Floor- 2996 sf

2BR Townhouse A Total - 1610 sf

Second Floor- 860 sf

Third Floor- 750 sf

2BR Townhouse B Total - 1615 sf

Second Floor- 865 sf

Third Floor- 750 sf



KEY PLAN



THIRD FLOOR

15 HIGH STREET, NORWELL, MA

UNIT PLANS - SIX-PLEX

JANUARY 29, 2021

SCALE: 1/8"=1'-0"





SQUARE FOOTAGE TOTALS

Eight-Plex Building Total - 8,885 sf

First Floor - 1,903 sf

Second Floor - 3,680 sf

Third Floor- 3,302 sf

1BR Flat ADA Total - 800 sf

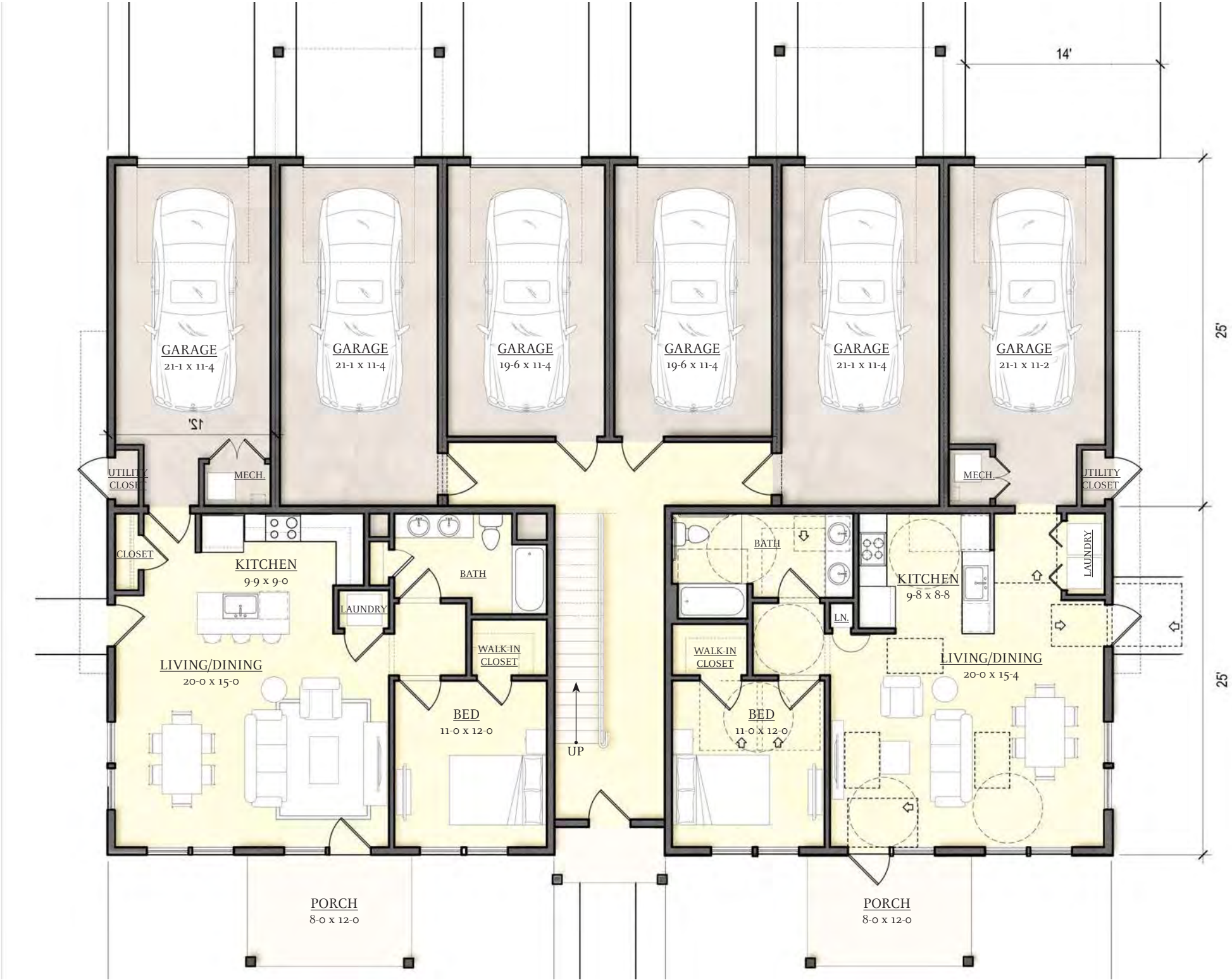
2BR Townhouse Total - 1,544 sf

Second Floor - 860 sf

Third Floor - 684 sf



KEY PLAN



FIRST FLOOR

15 HIGH STREET, NORWELL, MA

UNIT PLANS - EIGHT-PLEX (SHOWN WITH ONE BEDROOM ACCESSIBLE UNIT)

JANUARY 29, 2021

SCALE: 1/8"=1'-0"

0' 1' 2' 4' 8' 16' 32'





**SQUARE FOOTAGE TOTALS**

Eight-Plex Building Total - 8,885 sf

First Floor - 1,903 sf

Second Floor - 3,680 sf

Third Floor- 3,302 sf

1BR Flat Total - 805 sf

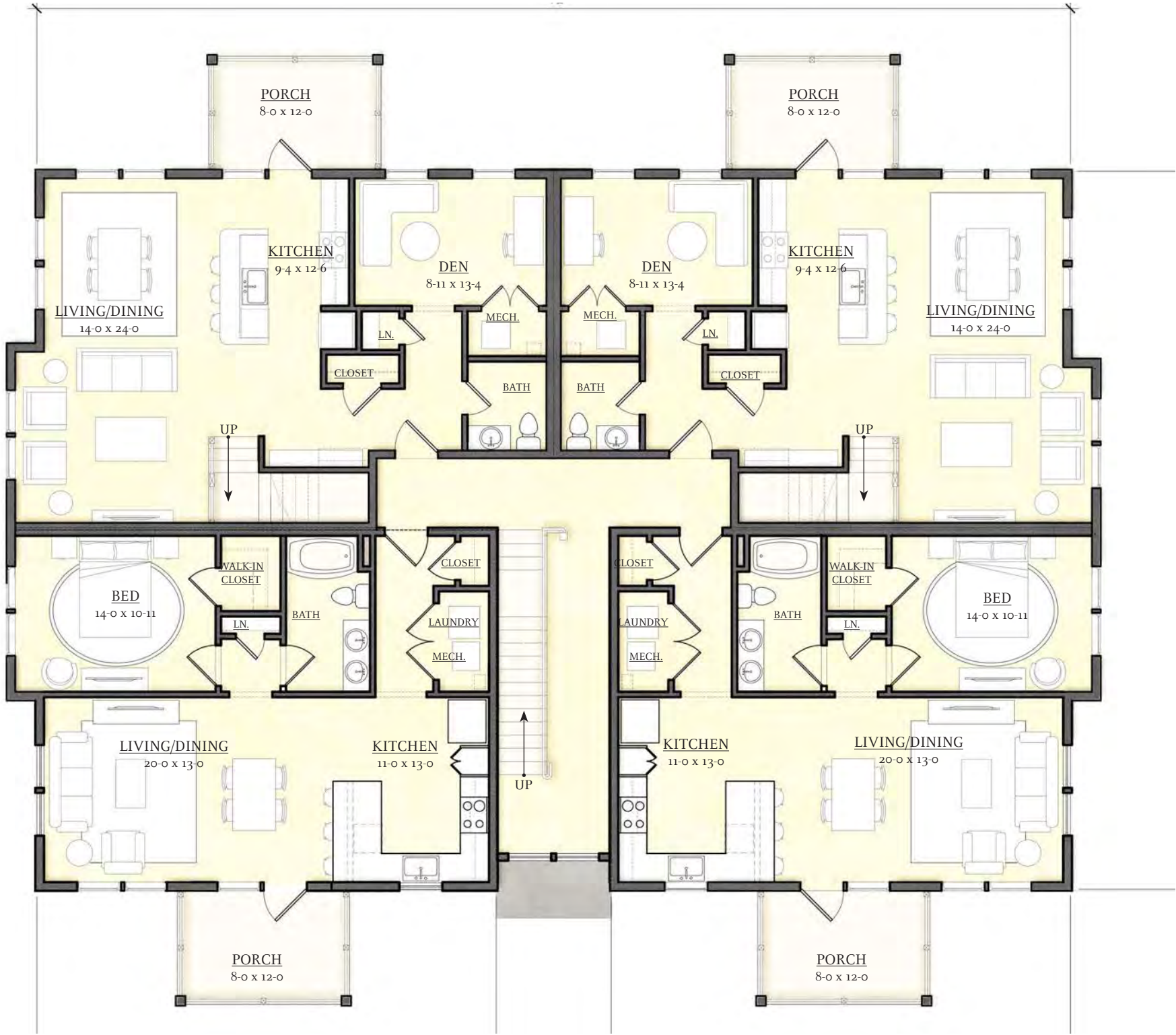
2BR Townhouse Total - 1,544 sf

Second Floor - 860 sf

Third Floor - 684 sf



KEY PLAN



SECOND FLOOR

# 15 HIGH STREET, NORWELL, MA

UNIT PLANS - EIGHT-PLEX

JANUARY 29, 2021

SCALE: 1/8"=1'-0"





**SQUARE FOOTAGE TOTALS**

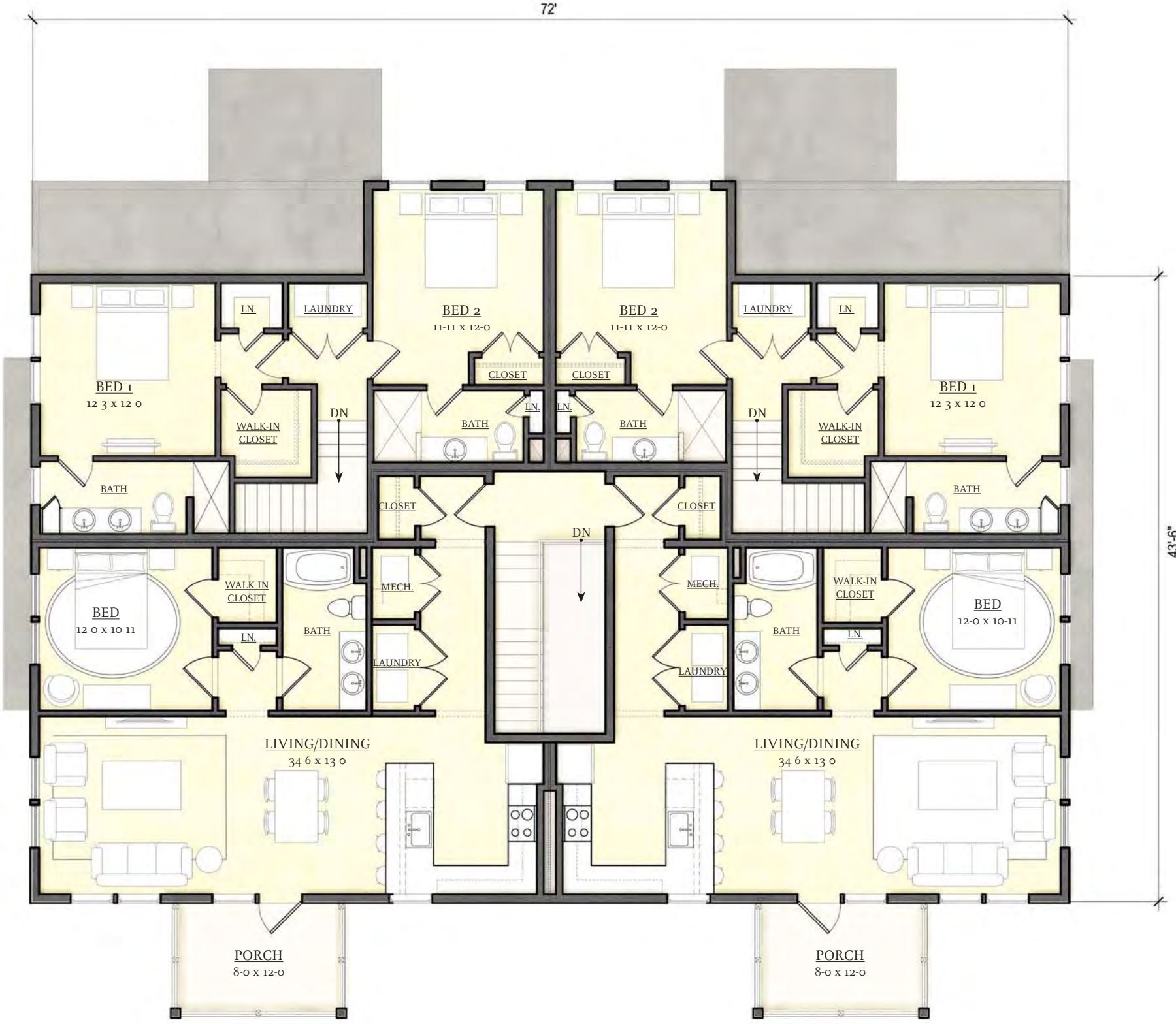
Eight-Plex Building Total - 8,885 sf  
 First Floor - 1,903 sf  
 Second Floor - 3,680 sf  
 Third Floor- 3,302 sf

1BR Flat Total - 885 sf

2BR Townhouse Total - 1,544 sf  
 Second Floor - 860 sf  
 Third Floor - 684 sf



KEY PLAN



THIRD FLOOR

# 15 HIGH STREET, NORWELL, MA

UNIT PLANS - EIGHT-PLEX

JANUARY 29, 2021

SCALE: 1/8"=1'-0"

