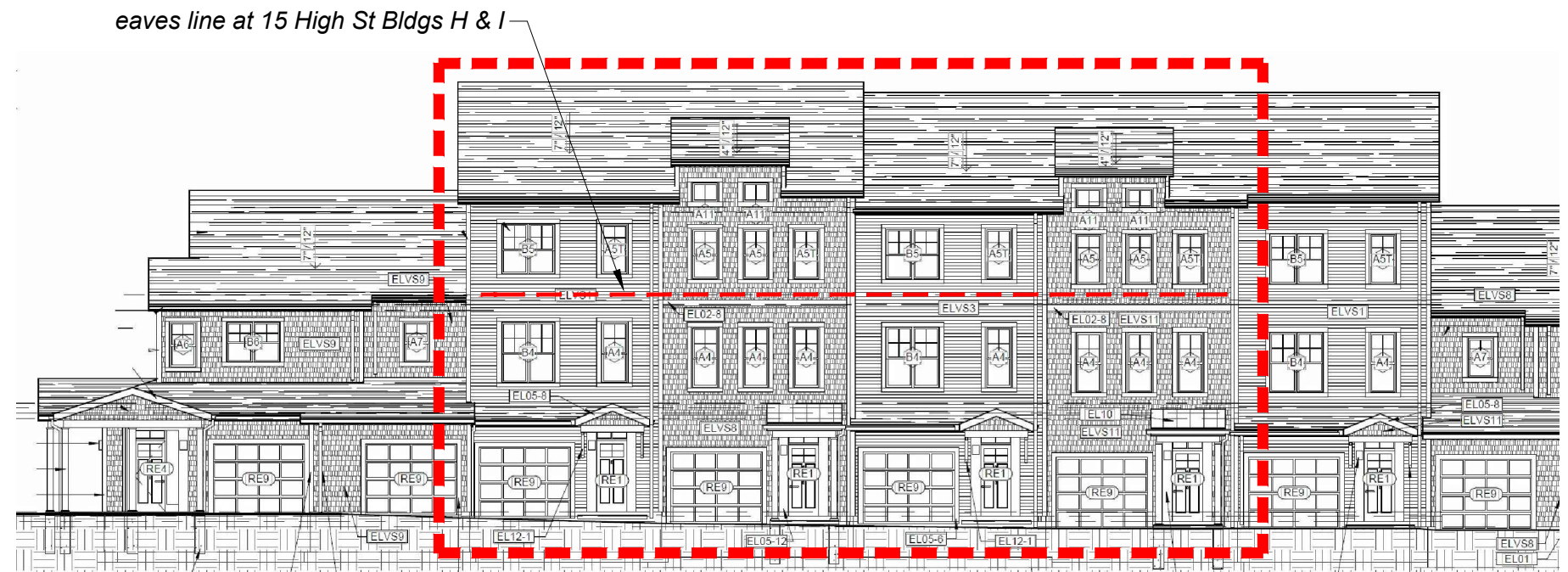




15 High Street - Bldgs H & I: Green-Side Elevation



Avalon Acton Phase II - Bldg 1

* The area enclosed in the dashed rectangle is approximately the same height (43') and width (72') as Bldgs H & I at High Street. However, the third floor of the High Street buildings is only a partial floor and sits within the roofline. This is intended to reduce the visual impact of the building. Building 1 at Avalon Acton II, by comparison, is three full stories.



15 High Street - Bldgs H & I: Driveway-Side Elevation



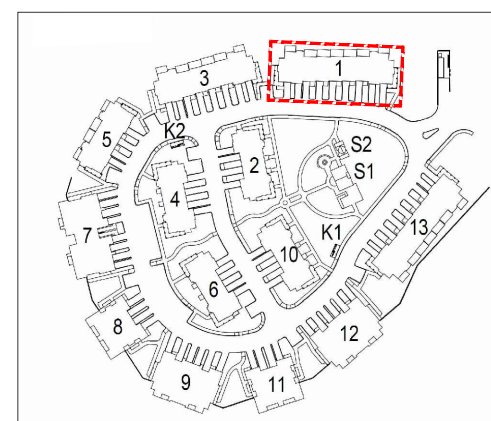
15 High Street - Bldgs H & I: Gable Elevation



Avalon Acton Phase II - Bldg 1



Key Plan: 15 High Street



Key Plan: Avalon Acton II

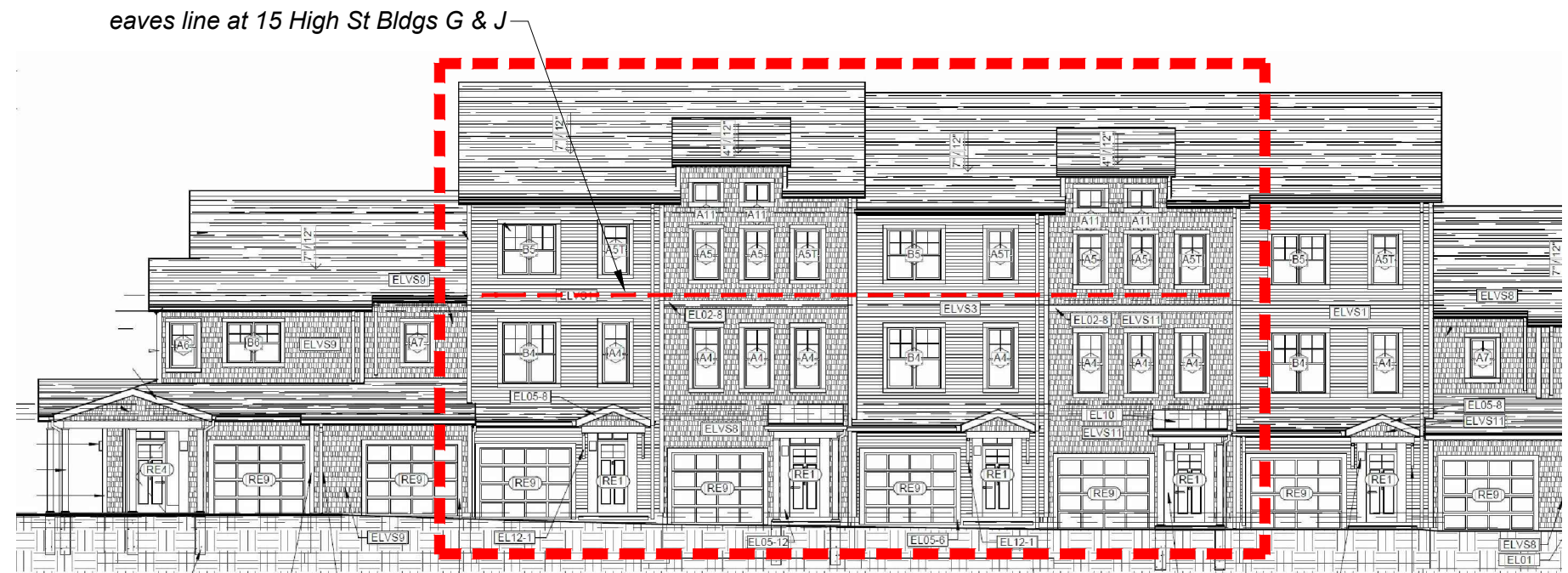
15 High Street, Norwell - Building Precedents

Comparison between **Bldgs H & I** (High St) and **Bldg 1** (Avalon Acton II)

August 2, 2021



15 High Street - Bldgs G & J: Green-Side Elevation



Avalon Acton Phase II - Bldg 1

* The area enclosed in the dashed rectangle is approximately the same height (43') and width (72') as Bldgs G & J at High Street. However, the third floor of the High Street buildings is only a partial floor, and sits within the roofline. This is intended to reduce the visual impact of the building. Building 1 at Avalon Acton II, by comparison, is three full stories. Note that Bldgs G & J have only small third-floor dormers that are about a third of the length of the roof.



15 High Street - Bldgs G & J: Driveway-Side Elevation



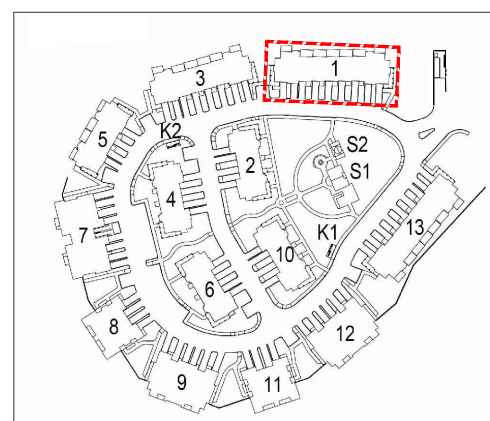
15 High Street - Bldgs G & J: Gable Elevation



Avalon Acton Phase II - Bldg 1



Key Plan: 15 High Street



Key Plan: Avalon Acton II

15 High Street, Norwell - Building Precedents

Comparison between **Bldgs G & J** (High St) and **Bldg 1** (Avalon Acton II)

August 2, 2021



15 High Street - Bldg B: Driveway-Side Elevation



15 High Street - Bldg B: Gable Elevation



Avalon Acton II - Bldg 2: Gable Elevation

** The ridges of the end units of Bldg 2 at Avalon Acton II are approximately the height (31') of Bldg B at High Street.*



Avalon Acton II - Bldg 2: Driveway-Side Elevation

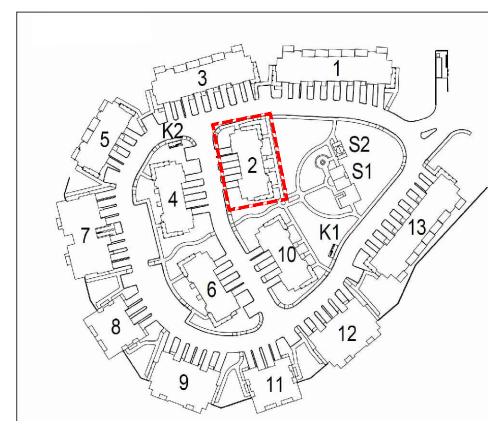
** The length of Bldg 2 at Avalon Acton II is approximately the length (100') of Bldg B at High Street.*



Avalon Acton Phase II - Bldg 2 (mirrored)



Key Plan: 15 High Street



Key Plan: Avalon Acton II

15 High Street, Norwell - Building Precedents

Comparison between **Bldg B** (High St) and **Bldg 2** (Avalon Acton II)

August 2, 2021



15 High Street - Bldgs A, E, F: Driveway-Side Elevation



15 High Street - Bldgs A, E, F: Gable Elevation



Avalon Acton II - Bldg 2: Gable Elevation



Avalon Acton II - Bldg 2: Driveway-Side Elevation

* Bldg 2 at Avalon Acton II (100' long) is approximately 20' longer than Bldgs A, E, and F at High Street.

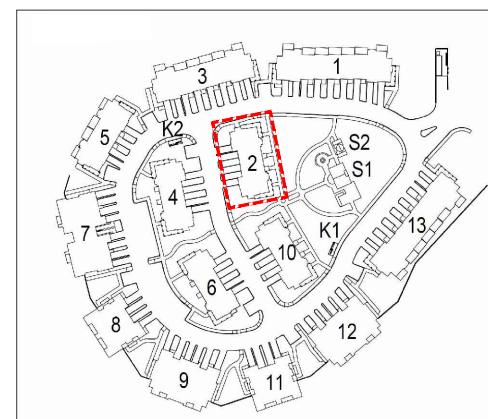
* The ridges of the end units of Bldg 2 at Avalon Acton II (31') are two feet shorter than the height (33') of Bldgs A, E, and F at High Street.



Avalon Acton Phase II - Bldg 2 (mirrored)



Key Plan: 15 High Street



Key Plan: Avalon Acton II

15 High Street, Norwell - Building Precedents

Comparison between **Bldgs A, E, & F** (High St) and **Bldg 2** (Avalon Acton II)

August 2, 2021



Avalon Acton II - Bldg 3: Driveway-Side Elevation



Avalon Acton Phase II - Bldg 3

** Bldg 3 at Avalon Acton II is approximately the same length (148') and depth (45') as Bldgs C and D at High Street*



15 High Street - Bldgs C & D: Driveway-Side Elevation



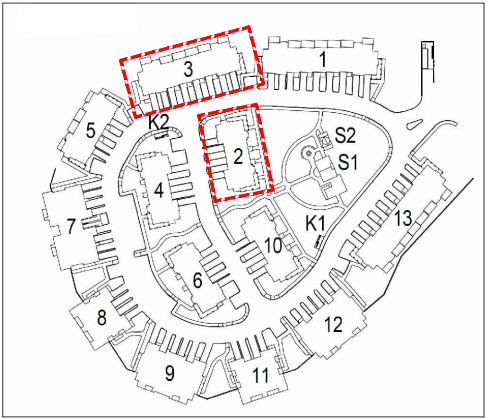
15 High Street - Bldgs C & D: Gable Elevation



Avalon Acton II - Bldg 2: Gable Elevation



Key Plan: 15 High Street



Key Plan: Avalon Acton II

** The ridges of the end units of Bldg 2 at Avalon Acton II (31') are about the same height as the ridges at the ends of Bldgs C and D. The middles of Bldgs C and D are about 5' higher (36').*

15 High Street, Norwell - Building Precedents

Comparison between **Bldgs C & D** (High St) and **Bldgs 2 & 3** (Avalon Acton II)

August 2, 2021