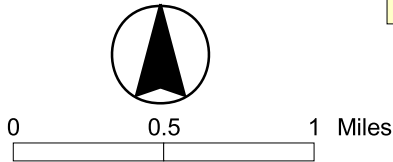
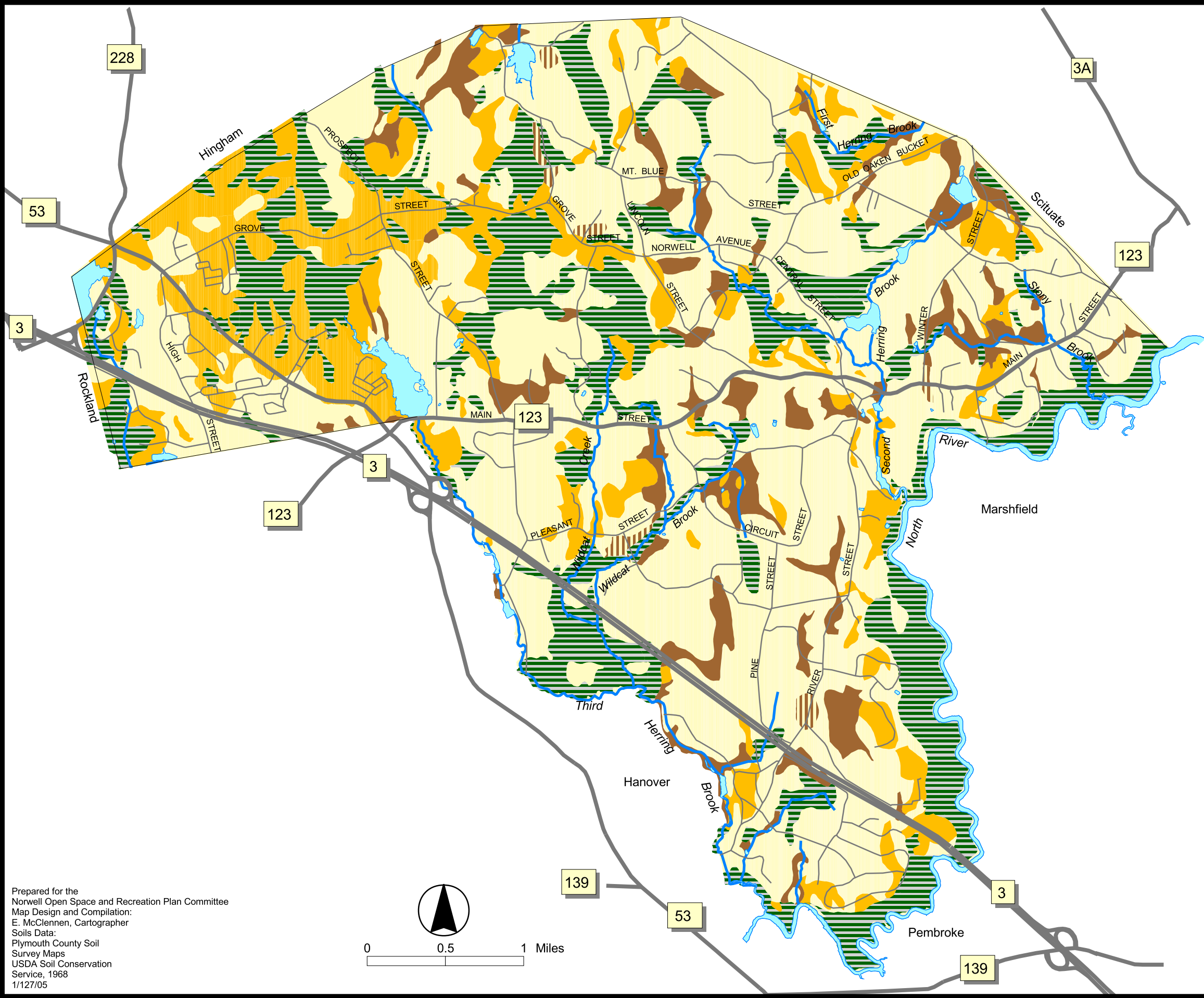


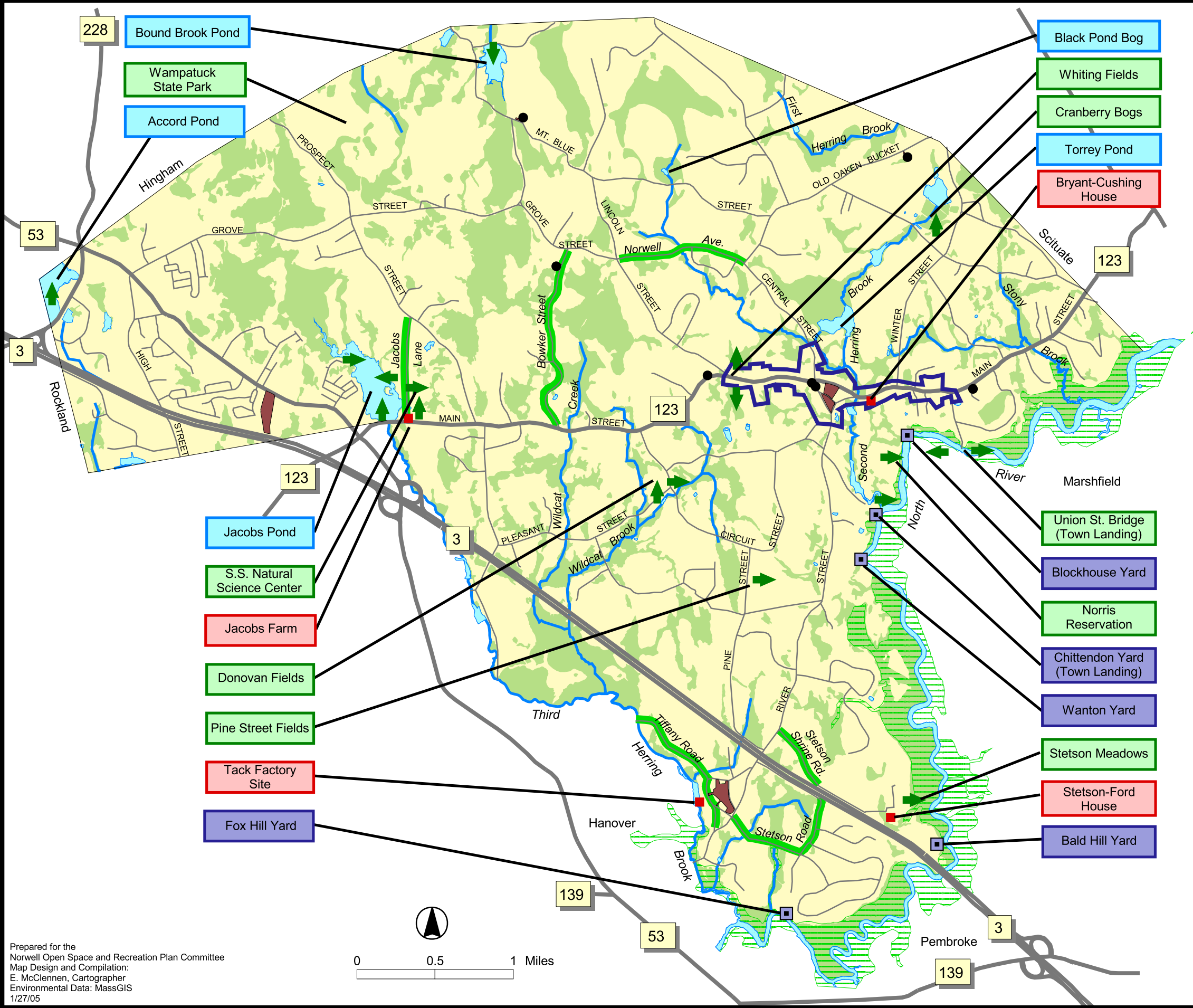
Town of Norwell
2004 Open Space and Recreation Plan
Map 2

SOILS



Town of Norwell
2004 Open Space and Recreation Plan
Map 3

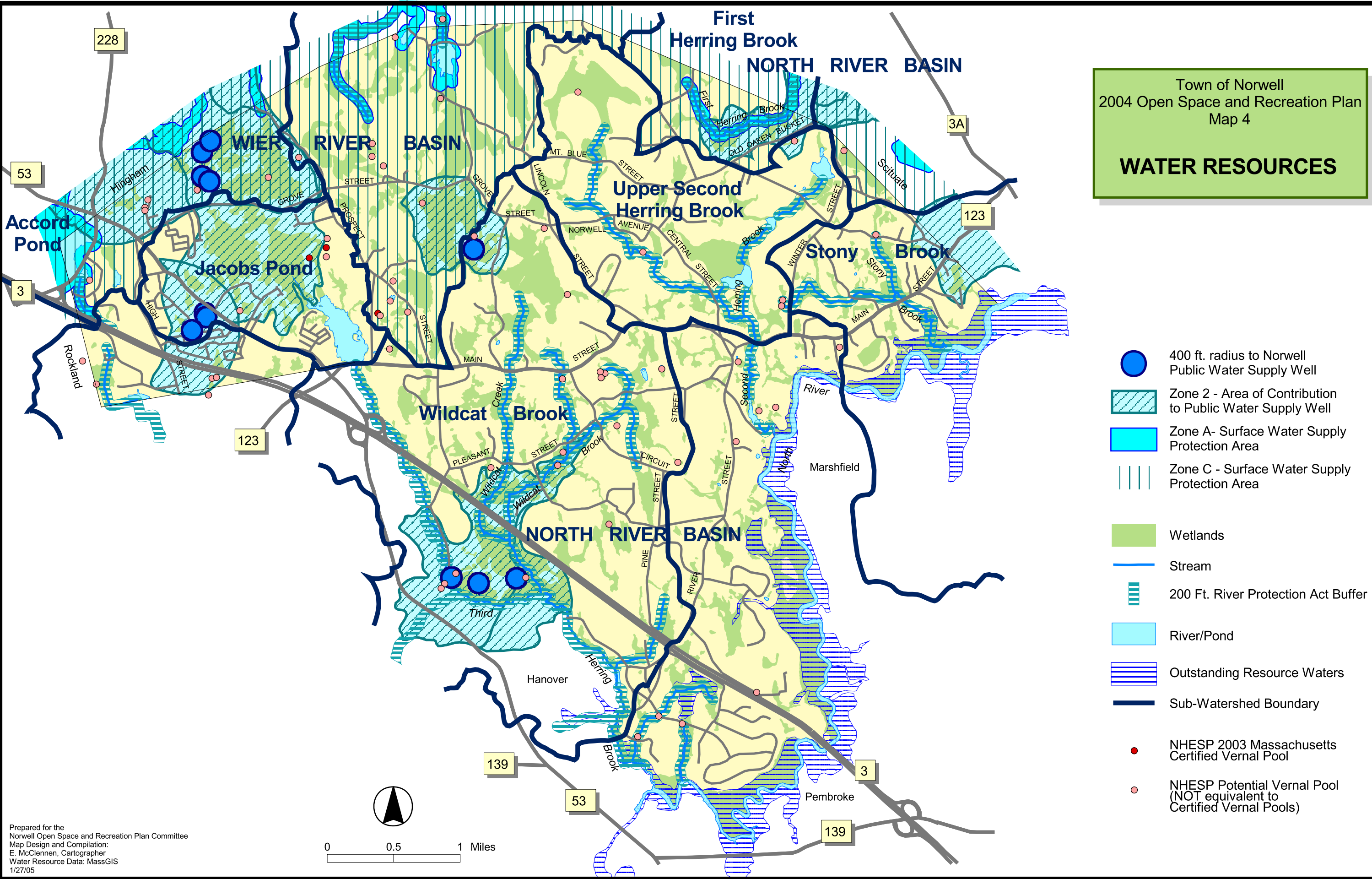
UNIQUE FEATURES


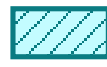





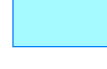






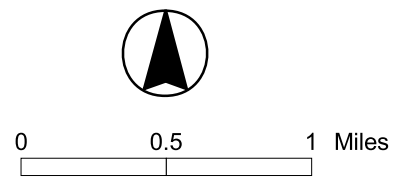
- Small Cemetery or Monument
- State Register of Historic Places Building/Site
- ▣ North River Historic Shipyard Site
- ➡ Scenic Vista
- Pond
- Stream
- 6 Scenic Roads
- ▭ Norwell Village Historic District
- Cemetery
- Wetlands
- ▨ North River Marsh

Town of Norwell
2004 Open Space and Recreation Plan
Map 4

WATER RESOURCES

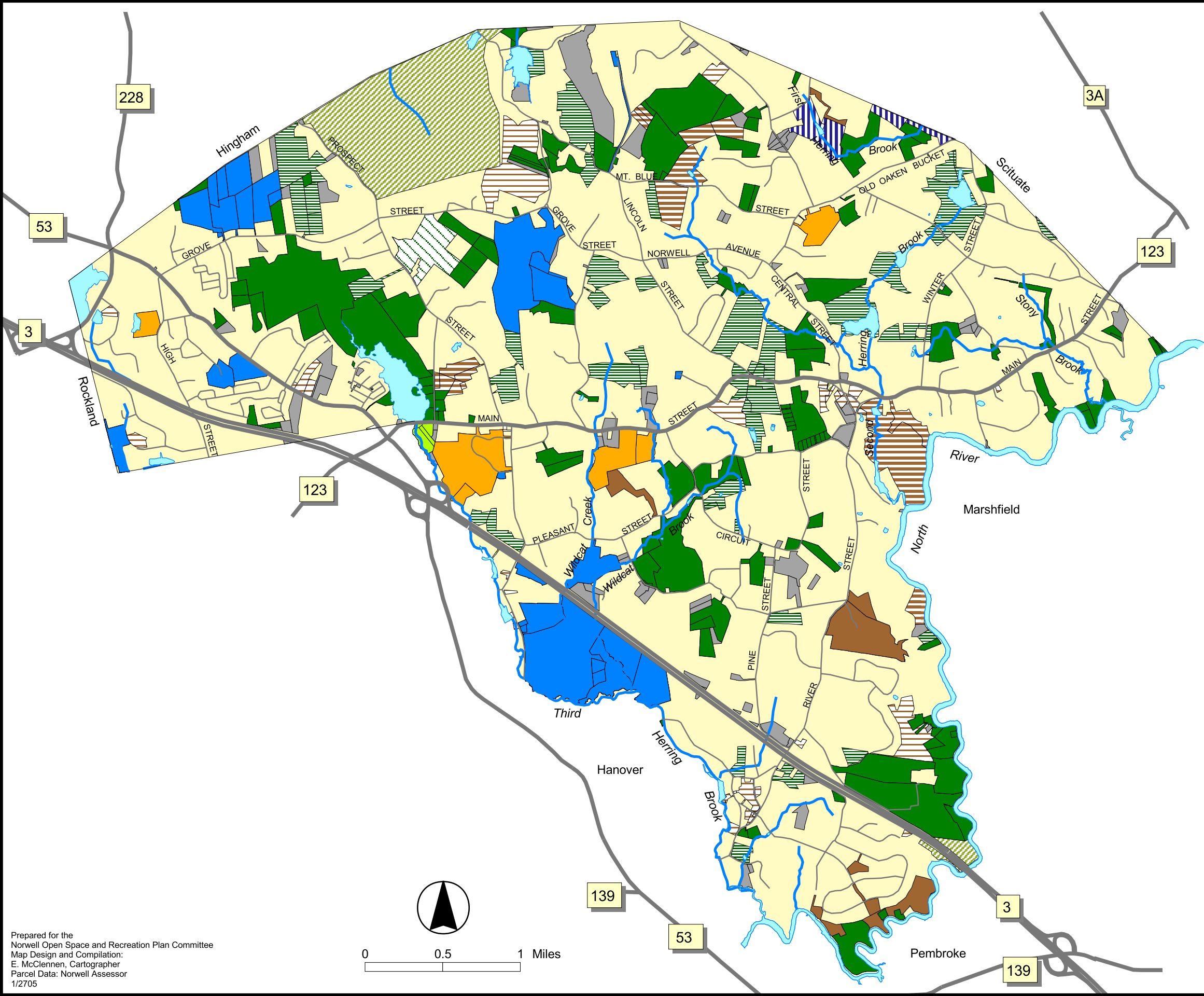


-  400 ft. radius to Norwell Public Water Supply Well
-  Zone 2 - Area of Contribution to Public Water Supply Well
-  Zone A- Surface Water Supply Protection Area
-  Zone C - Surface Water Supply Protection Area
-  Wetlands
-  Stream
-  200 Ft. River Protection Act Buffer
-  River/Pond
-  Outstanding Resource Waters
-  Sub-Watershed Boundary
-  NHESP 2003 Massachusetts Certified Vernal Pool
-  NHESP Potential Vernal Pool (NOT equivalent to Certified Vernal Pools)



Town of Norwell
2004 Open Space and Recreation Plan
Map 5-1

Open Space



Protected Lands

- Conservation Land
- Water Department Land
- Woodworth Fields Protected by Historic New England/SPNEA
- Town of Scituate (Conservation or Water Dept.)
- Commonwealth of Massachusetts
- Quasi Public Open Space
- Chapter 61 Parcel
- Conservation Restriction
- Agricultural Preservation Restriction

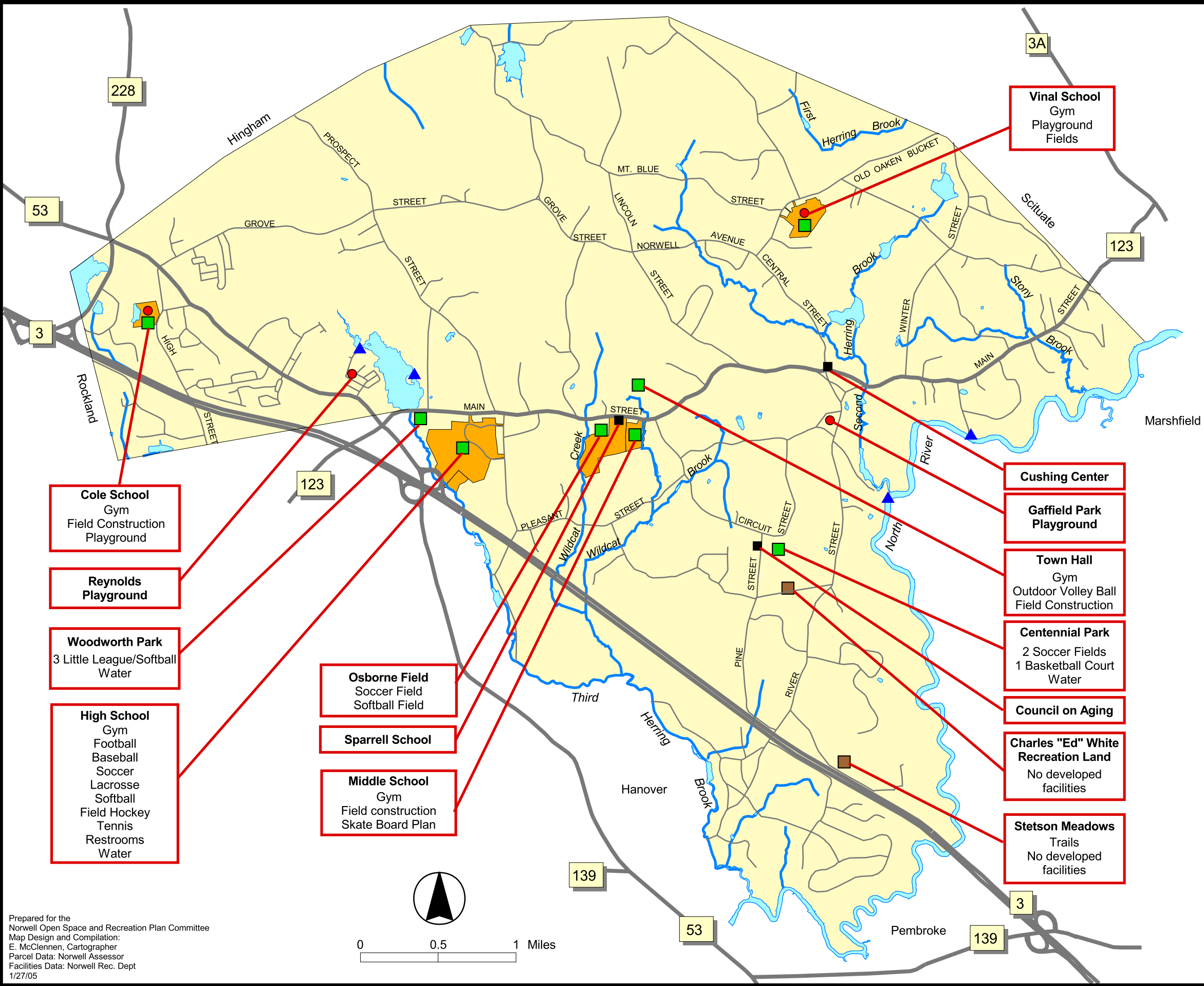
Unprotected Lands

- School Use
- Other Town Owned Parcels
- Church or Private Organization

- River/Pond
- Stream

Town of Norwell
2004 Open Space and Recreation Plan
Map 5-3

RECREATION LAND and FACILITIES



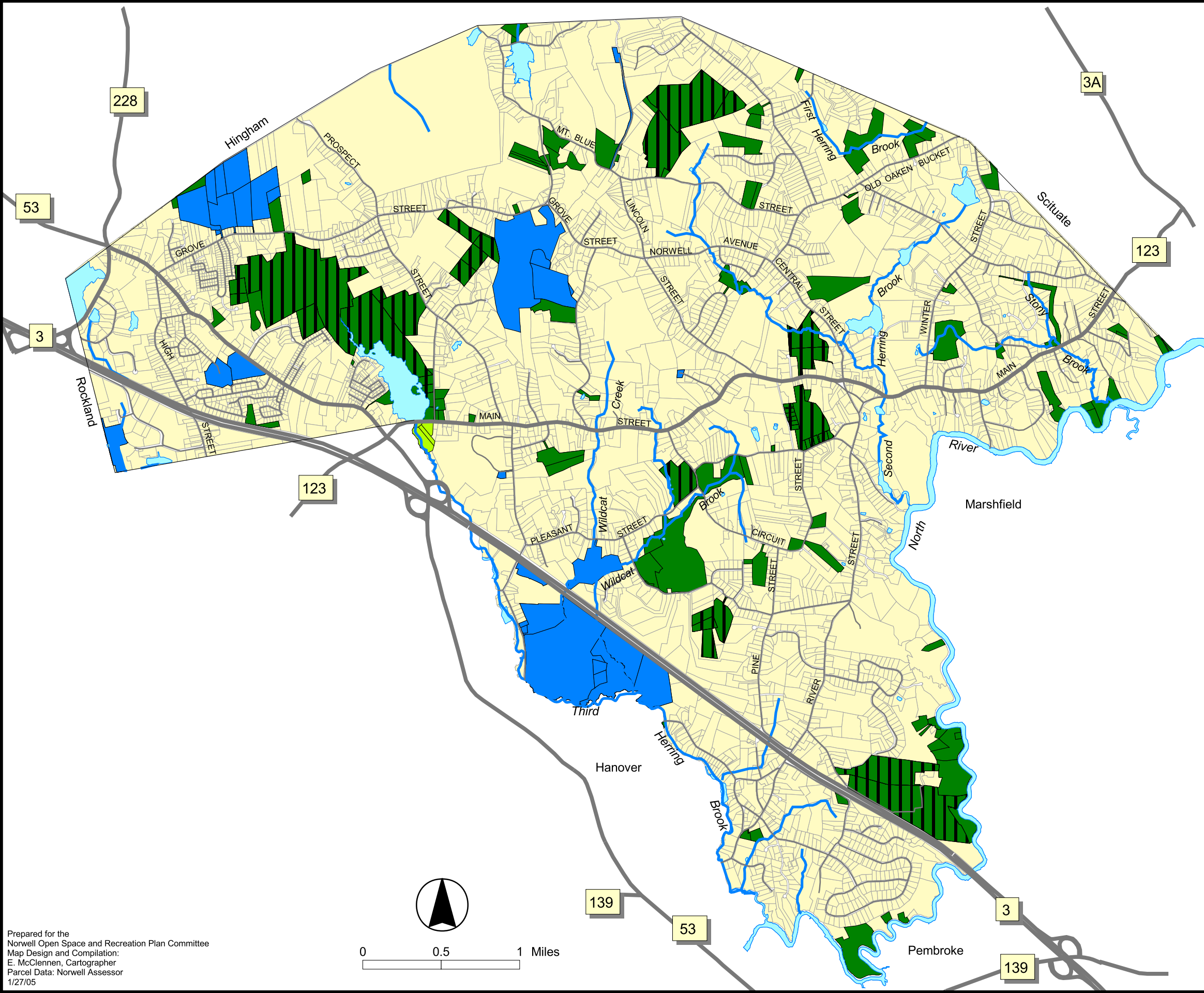
- Childrens Playground
- Athletic Fields
- Recreational Program Building
- ▲ Town Landing
- Other Recreation Site
- School Parcel
- River/Pond
- Stream



0 0.5 1 Miles

Town of Norwell
2004 Open Space and Recreation Plan
Map 5-2

**Town Owned
Protected Land**



**Norwell
Conservation Commission Land**

- Conservation Land
- Conservation Land with Trails

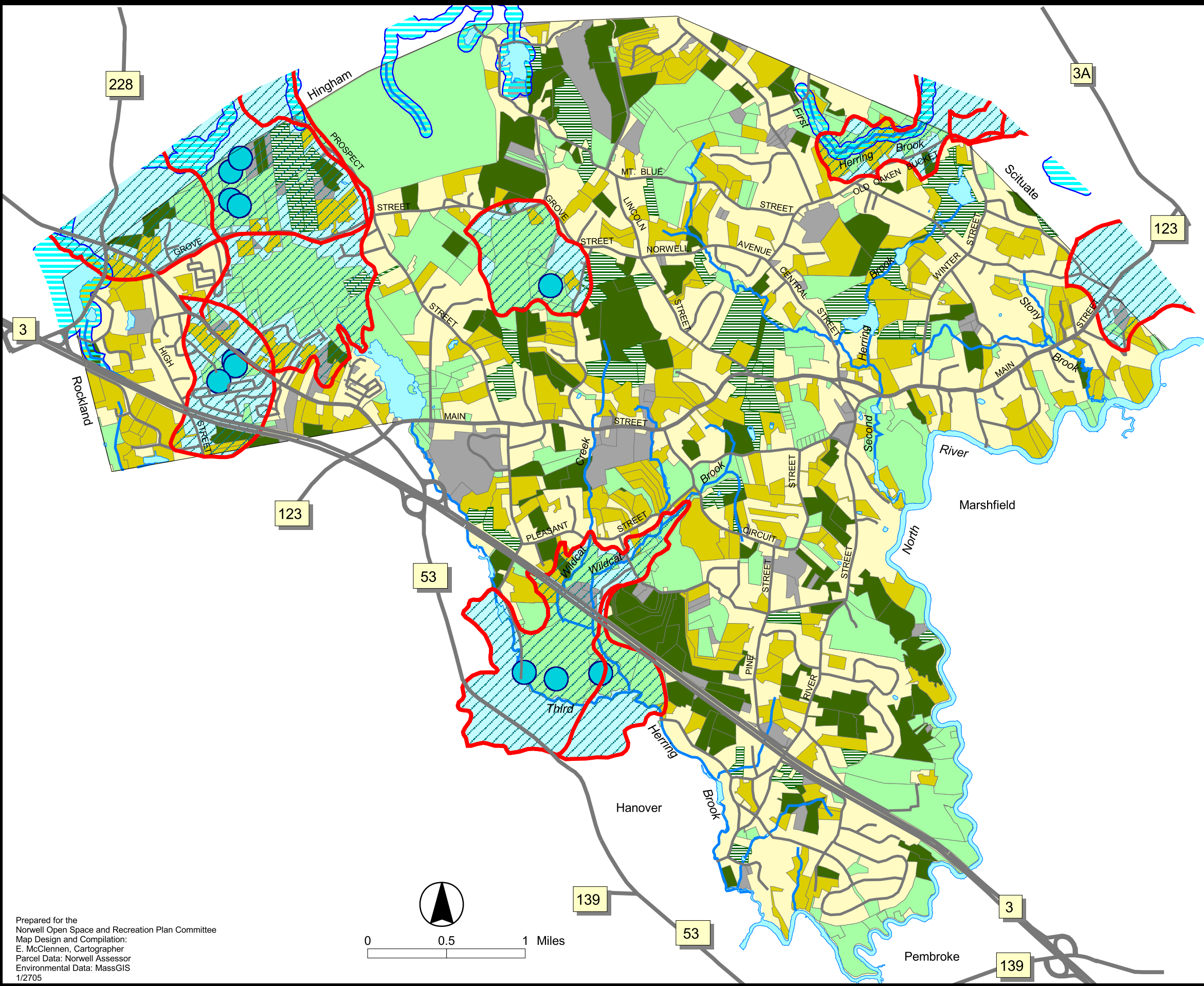
Other Protected Town Land

- Water Department Land
- Woodworth Fields Protected by Historic New England/SPNEA

- River/Pond
- Stream

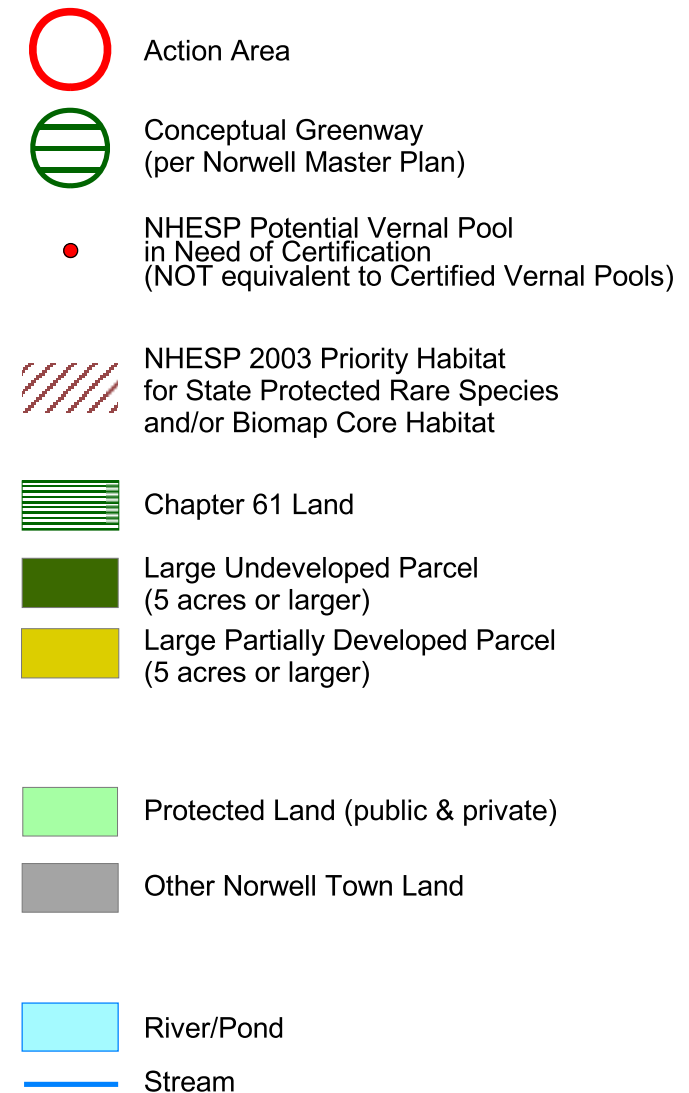
Town of Norwell
2004 Open Space and Recreation Plan
Map 6-1

WATER PROTECTION ACTION PLAN



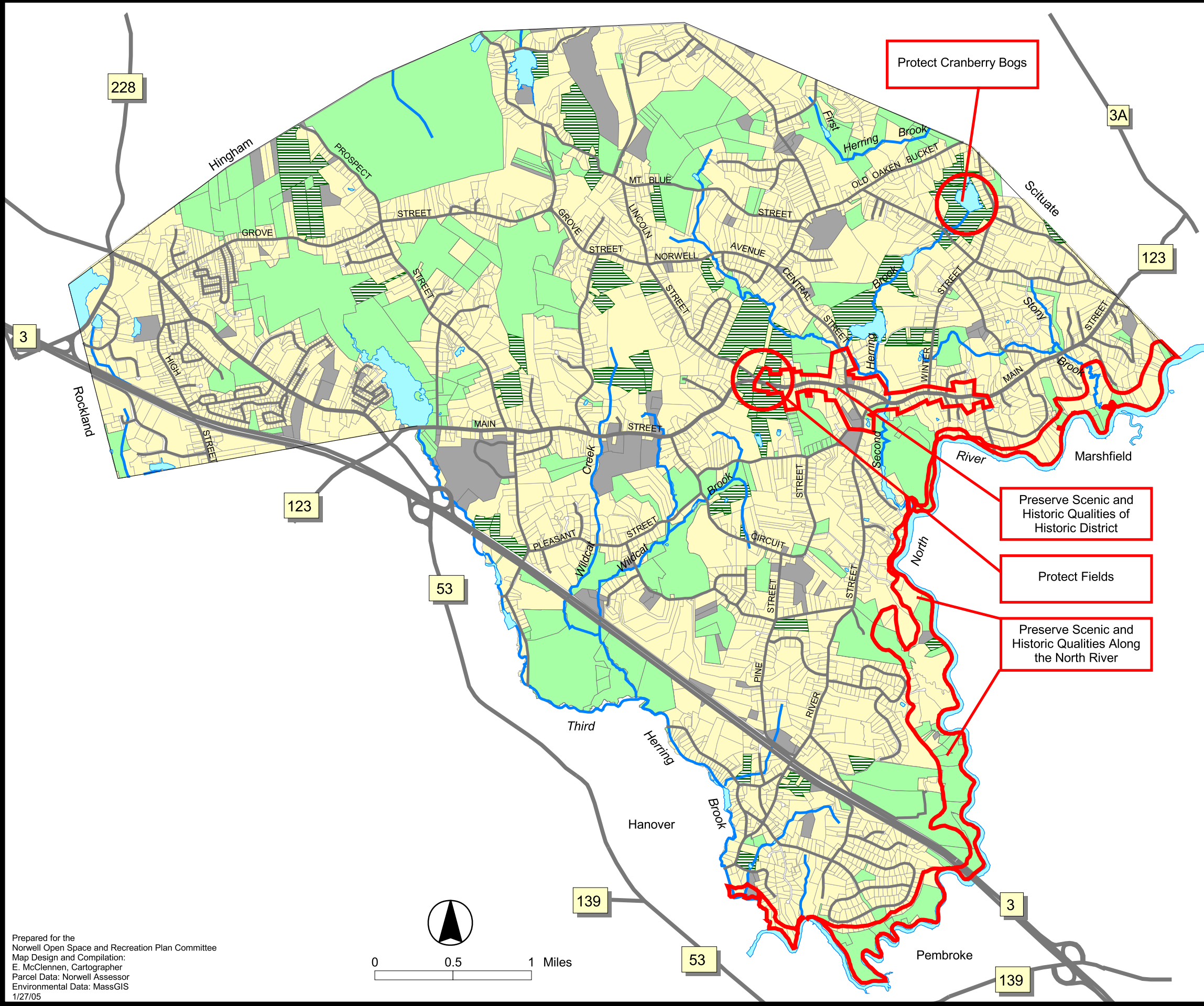
- Actions Areas
- PROTECTION PRIORITIES:
- Zone 2 - Area of Contribution to Public Water Supply Well
 - Zone A- Surface Water Supply Protection Area
 - Chapter 61 Land
 - Large Undeveloped Parcel (5 acres or larger)
 - Large Partially Developed Parcel (5 acres or larger)
 - Protected Land (public & private)
 - Other Norwell Town Land
 - 400 ft. Radius to Public Water Supply Well
 - River/Pond
 - Stream

NATURAL RESOURCES ACTION PLAN



Town of Norwell
2004 Open Space and Recreation Plan
Map 6-3

SCENIC RESOURCES ACTION PLAN



 Action Area

 Chapter 61 Land

 Protected Land (public & private)

 Other Norwell Town Land

 River/Pond

 Stream



0 0.5 1 Miles

Town of Norwell
2004 Open Space and Recreation Plan
Map 6-4

RECREATION ACTION PLAN

