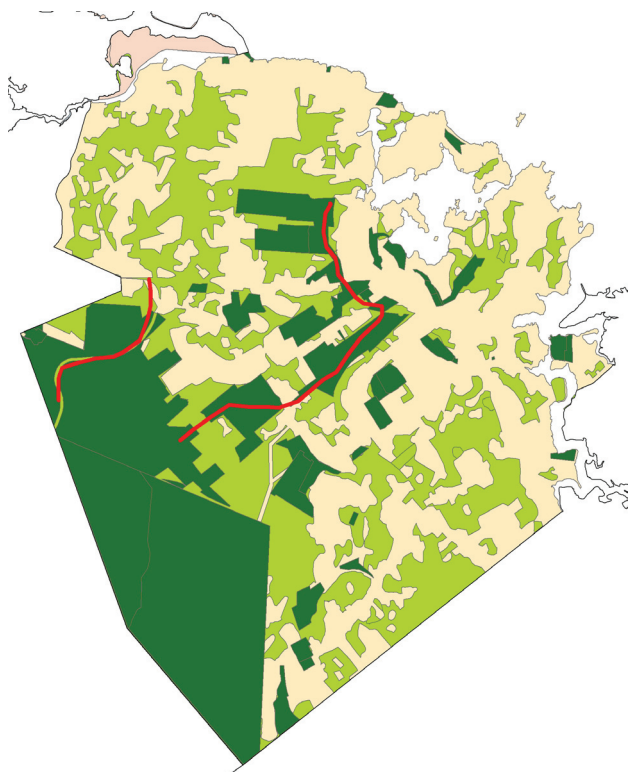


Proposed bike routes.



Proposed trail routes.

Citizens in the five South Shore communities surrounding Wompatuck State Park—Cohasset, Hingham, Hull, Norwell, and Scituate—have a vision for a sustainable future. Central to their vision is alternative transportation. The area’s nearly flat topography, abundance of open space, and extensive road network make it easy for South Shore residents to walk or bike to many destinations.

Community leaders and activists in each of the five towns have been working independently to promote alternative transportation in their individual communities. Recently, Sustainable South Shore, a volunteer group devoted to promoting sustainable lifestyles, brought representatives from the five towns together to discuss non-motorized travel on a regional level. Out of their discussion came an expanded vision for a greenway network which would support alternative transportation. Such a network could improve connections in the region while promoting environmental health by linking open spaces, parks, estuaries and other areas of ecological importance.

This document begins the greenway design process with preliminary analyses of existing physical and environmental conditions. Criteria for alternative transportation routes are established. These criteria are based on both Geographical Imaging System (GIS) data and information gathered during two public meetings, one held at the beginning of the process and one at the end. Given the constraints and opportunities of the landscape, a plan for a greenway network is proposed.