

Welcome Volunteers!



Adopt-A-Trail



By adopting a trail, you are helping to make the Norwell Trail system a better place for hikers, bikers, naturalists, kayakers, and all other trail-users. We sincerely appreciate your time and efforts.

Thank You!!!

Who We Are

Since 1961, the Norwell Conservation Commission has worked to preserve natural resources and open spaces throughout the town.

The Friends of Norwell Trails assist the town by:

- 1) Monitoring town trails
- 2) Reporting stewardship needs
- 3) Becoming volunteer trail stewards

The Adopt-A-Trail program is an integral first step in establishing this new volunteer group.

Volunteering

The town stewardship team is small and we greatly value our volunteers. With more eyes and hands, we can get more done!



Properties & Trails

- Jacobs Pond
- Fogg Forest
- Miller Woods
- Cuffee Hill
- Stetson Meadows
- Donovan-Wildcat
- Hatch Lots
- Simon-Bowker
- Carlton
- The Pathways
- And More!

Jacobs Pond Conservation Area

- 189-acre property surrounds the 60-acre pond
- This man-made pond created in 1730 by the damming of Third Herring Brook at Main Street
- Includes trails, ADA accessible dock with canoe/kayak launch, agricultural land, recreation field, and the historic farmhouse

Cuffee Hill Conservation Area

- 350-acres property in a collaborative effort with the Nature Conservancy representing Cuffee Hill, Black Pond Swamp, and Black Pond Bog
- The preserve protects NHESP core & rare habitats, including a quaking bog and White Cedar Swamp
- Acquired by the town in 2013 under the care of the Historic and Conservation Commissions
- The largest continuous conservation area in Norwell, Cuffee is part of the larger regional “Greenway” in the town Master Plan

Donovan-Wildcat Trails & Fields

- 50-acre site leased for agricultural purposes and connecting 100-acre conservation area
- The Donovan Fields have been used for agriculture since the 1820's
- When acquired by the town in 1977, a portion was sold for a cluster-zoned housing development under the mandate that the Wildcat trails be created

Expectations and Goals for Adopt-A-Trail

- Have at least one steward per trail section
- Monitoring feedback at least every 3 months
- Improve quality of info on kiosks
- Maintaining ecologically friendly yet welcoming parks
- Give our volunteers the tools to be great land stewards
- Create a long lasting partnership with community volunteer members

Volunteering

- As a Volunteer Land Steward, you will have opportunities to:
 - Gain hands on stewardship experience
 - Identify property needs and improvements
 - Engage with people in your community
 - Monitor trails and properties
 - Help us improve our conservation lands

Safety

TICK IDENTIFICATION CARD



nymph



male



female

Deer ticks



male



female

American dog ticks

(actual size)

MA Department of Public Health

617.983.6800

www.mass.gov/dph



Poison oak

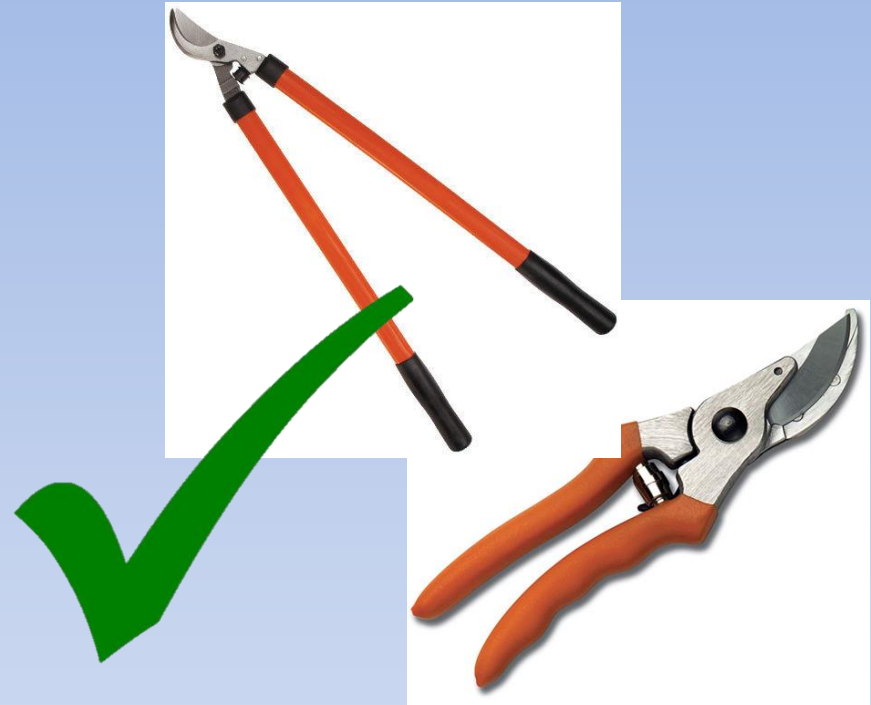


Poison sumac



Poison ivy

Safety



Do **NOT** use power tools/equipment.
If power tools are needed, alert the town
and let them handle the situation. Hand
tools like loppers or hand-pruners are fine.

So what could you be doing?

- Property monitoring
- Inspecting kiosks
- Inspecting trail signs, 911 Markers, and QR Codes
- Site maintenance
- Removal of trash
- Reporting vandalism, dumping, motorized vehicle use, illegal hunting
- Lead trail work days
- Reporting rare and/or invasive species



Species of Conservation Concern: INSECTS



New England Bluet
Damselflies rest with wings together.




Mocha Emerald
Dragonflies rest with wings apart.

Species of Conservation Concern: REPTILES

eastern box turtle
(*Terrapene carolina*)



10 cm 
4 inches 

© 2007 Encyclopædia Britannica, Inc.



© Paul J. Fusco

Species of Conservation Concern: PLANTS – Estuary Beggar-ticks



Estuary Beggar-ticks (*Bidens hyperborea*)

State Status: **Endangered**

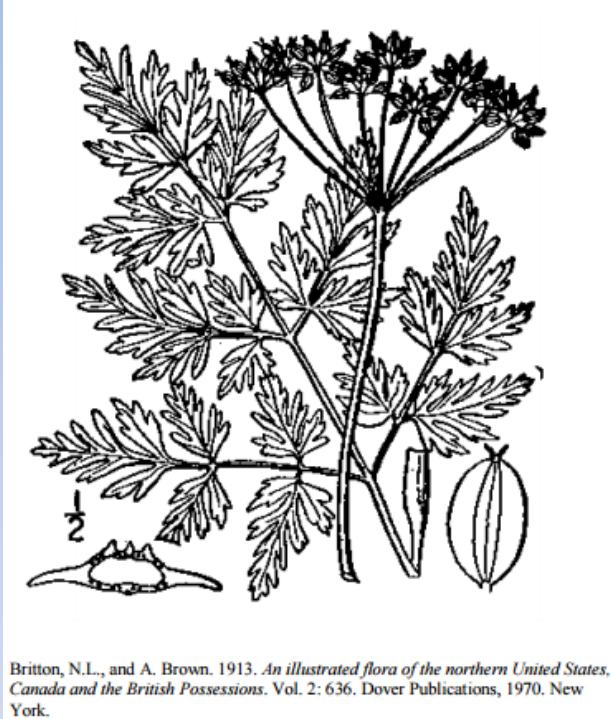
Federal Status: **None**

Found on edges of tidal rivers and marshes.



Species of Conservation Concern:

PLANTS – Hemlock Parsley



Hemlock Parsley (*Conioselinum chinense* (L.))

State Status: **Special Concern**

Federal Status: **None**

Found in swamps, wet meadows, bogs or fens, and marshy forests.

Species of Conservation Concern:

PLANTS – Parker's Pipewort



Photos by Jennifer Garrett, NHESP

Parker's Pipewort (*Eriocaulon parkeri*)

State Status: **Endangered**

Federal Status: **None**

Found on shallow, tidal fresh water
and on tidal mud flats of rivers.



Species of Conservation Concern:

PLANTS – Gypsywort



Photos by Robert Mohlenbrock

Gypsywort (*Lycopus rubellus*)

State Status: **Endangered**

Federal Status: **None**

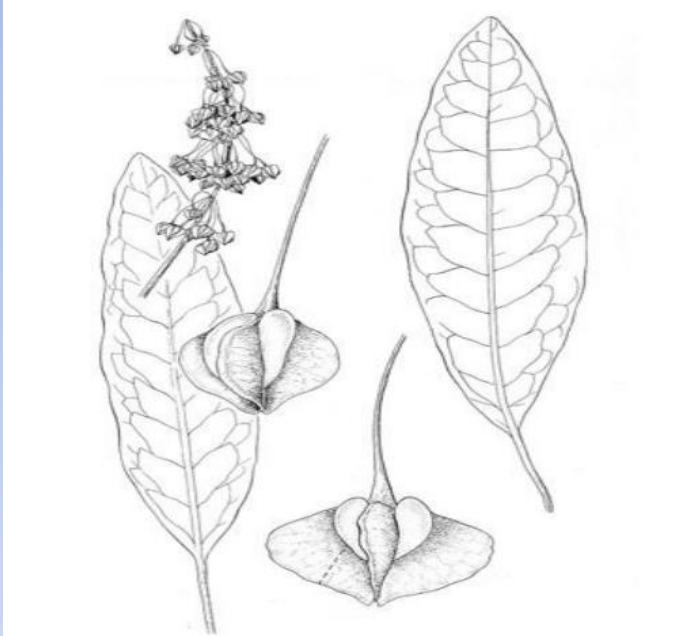
Found on damp soils, mainly maple swamps, marshy pond/lake shores, seepage areas, and floodplain forests



© 2016 David G. Smith

Species of Conservation Concern:

PLANTS – Swamp Dock



Holmgren, Noel H. 1998. *The Illustrated Companion to Gleason and Cronquist's Manual*. The New York Botanical Garden.

Swamp Dock (*Rumex verticillatus*)

State Status: **Threatened**

Federal Status: **None**

Found in water or in places that are periodically flooded



© 2016 Jennifer Garrett

MIPAG Voted Invasive Plants

- Norway Maple
- Sycamore Maple
- Bishop's Weed
- Tree of Heaven*
- Garlic Mustard*
- Japanese Barberry
- Fanwort
- Oriental Bittersweet*
- Black Swallow-wort
- Autumn Olive
- Burning Bush*
- Leafy Spurge
- Glossy Buckthorn*
- Horned Poppy
- Dame's Rocket
- Yellow Iris
- Tall Pepperweed
- Honeysuckles*
- Moneywort
- Purple Loosestrife*
- Milfoils
- Common Reed*
- Japanese Knotweed*
- Mile-a-minute Vine
- Crisped Pondweed
- Fig buttercup
- Black Locust
- Multiflora Rose*
- Rusty Willow
- Water-chestnut

Invasive Challenge!

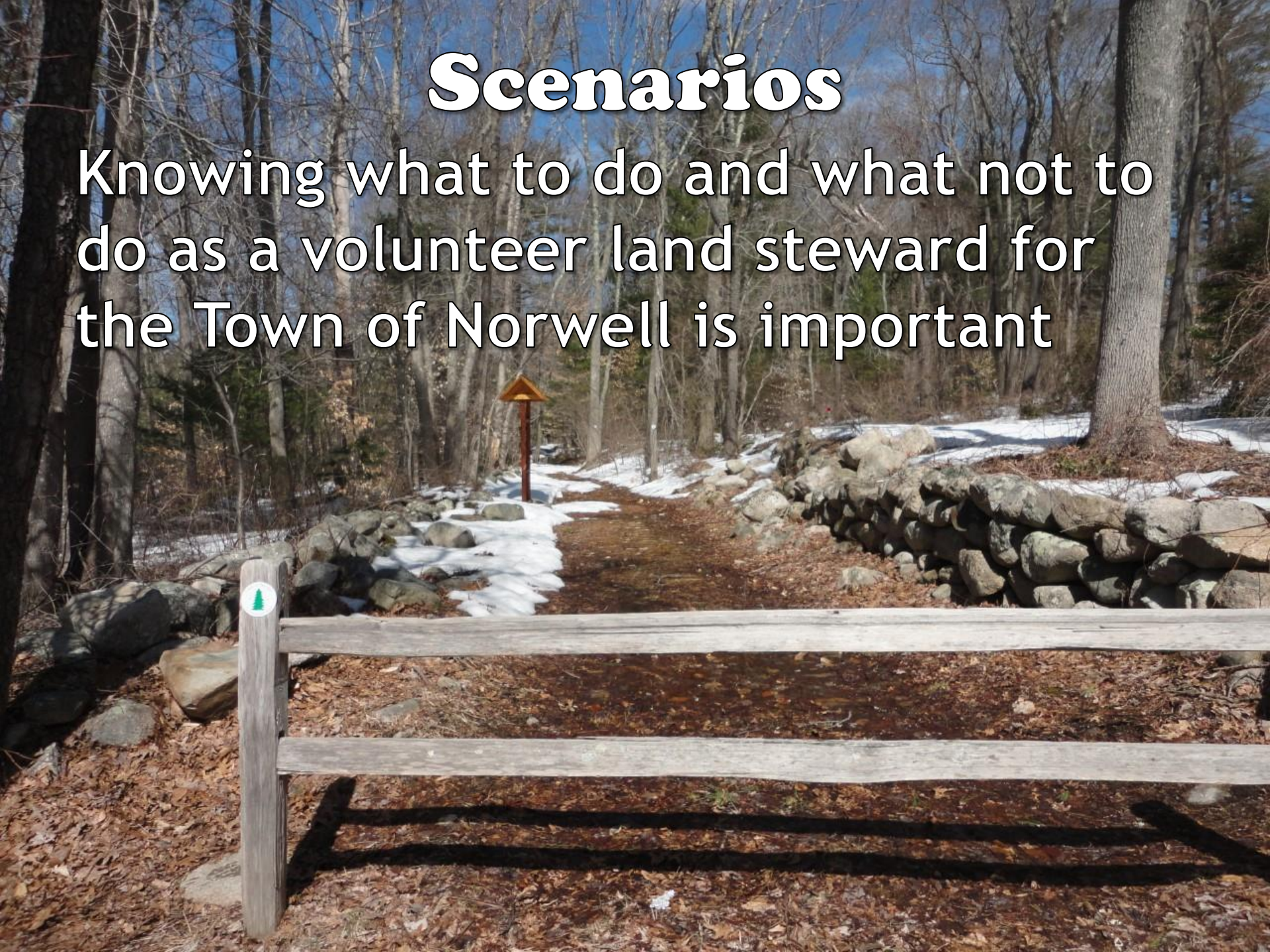


Invasive Challenge!



Scenarios

Knowing what to do and what not to do as a volunteer land steward for the Town of Norwell is important



Vandalism



Dumping



Motorized Vehicle Use



Other Possible Encounters

- Deer Stands
- Unauthorized hunting
- Storm damage
- Broken kiosks/signs
- Party Sites
- Campfire rings
- Unauthorized trail clearing



Documentation!

- Adopt-A-Trail volunteers should submit Monitoring Reports for their site at least once every 3 months.
- The more the better!
- Reports can be found on the Town Website: www.townofnorwell.net
 - Home >> Boards & Committees >> Conservation Commission >> Adopt-A-Trail Program

Report a Problem Stewardship Request/Observation Form

Location *

Pathway ▼

Other location *

Approximate location on Trail: Please add as much detail as possible so we can direct the trail crew to the problem *

Level of Importance/Need for Response *

1- Dangerous Situation, Safety Risk ▼

Please tell us how urgent a response is needed!

Observation / Report *

- Select - ▼

Insert photo

Files must be less than 100 MB.

Allowed file types: gif jpg jpeg png bmp tif pdf doc ppt pptx.

Choose File No file chosen

Upload

Name

Please provide your email for follow-up

Being able to communicate with you helps ensure your project is completed as quickly as possible

A green praying mantis is positioned in the center of the frame, partially obscured by tall, dry grass. A blue speech bubble with the word "Questions?" in white, bold, sans-serif font is located above the mantis. The background is a dense field of tall grass, some green and some brown, suggesting a natural habitat.

Questions?

Will Saunders

Conservation Agent - Town of Norwell

Conservation Commission

345 Main St, Norwell

wsaunders@townofnorwell.net

www.townofnorwell.net